



Contract No. HK/2009/01

Wan Chai Development Phase II – Central -Wan Chai Bypass at
Hong Kong Convention and Exhibition Centre

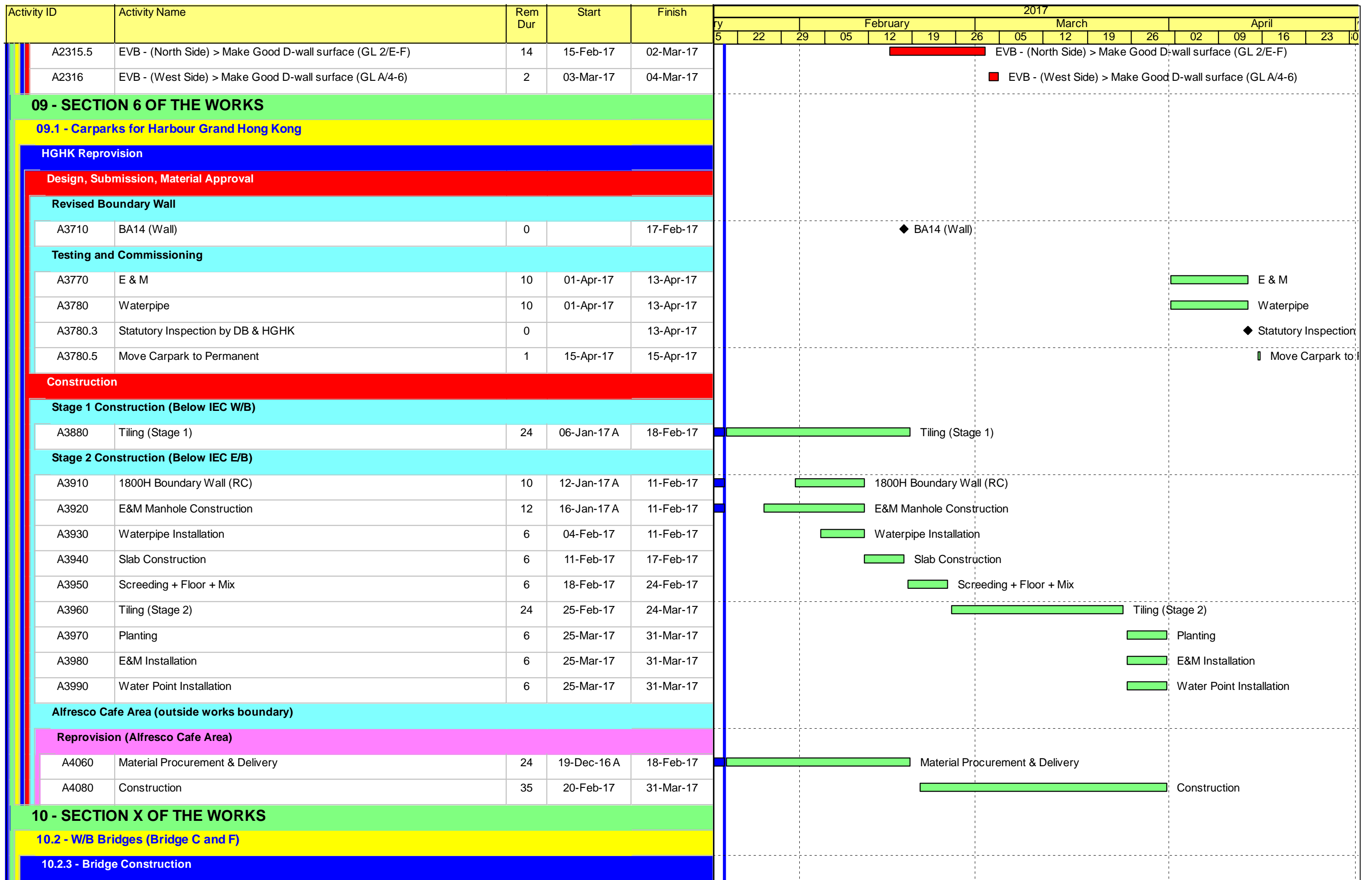
Construction Activities for Three Months Rolling

Construction Activities	May 2017	June 2017	July 2017
Reinstatement of Amenity Area			
Road and Drain Works			

Activity ID	Activity Name	Rem Dur	Start	Finish	2017																
					January					February				March				April			
					5	12	19	26	31	5	12	19	26	5	12	19	26	3	10	17	24
3MRP - Jan 2017 to Apr 2017																					
02 - PRE-CONSTRUCTION WORKS																					
02.3 - Method Statement / Shop Drawings																					
0230-1410	MS Landscape Deck Structure - ER Approval	28	20-Jan-17	16-Feb-17	MS Landscape Deck Structure - ER Approval																
0240-1280	Landscaping Design - ER Review/Resubmission	28	20-Jan-17	16-Feb-17	Landscaping Design - ER Review/Resubmission																
0240-1290	Landscaping Design - ER Approval	28	07-Dec-16 A	16-Mar-17	Landscaping Design - ER Approval																
0240-1295	Landscaping Design - Fabrication & Delivery	28	17-Mar-17	13-Apr-17	Landscaping Design - Fabrication & Delivery																
0240-1297	Green Wall Minimum 2 years Establishment - Finish	0		20-Apr-17	◆ Green Wall																
0240-1298	Green Roof Minimum 2 years Establishment - Start	0	04-Feb-17		◆ Green Roof Minimum 2 years Establishment - Start																
0240-2470	MS for for trial erection of green roof - No Adverse Comment	15	30-Oct-16 A	03-Feb-17	MS for for trial erection of green roof - No Adverse Comment																
02.5 - Bridge Segment/Beam Off-site Precasting																					
0250-4015	Bridge F2B - Pier F3B Segment - 5 nos. - Mould 2	29	20-Jan-17	24-Feb-17	Bridge F2B - Pier F3B Segment - 5 nos. - Mould 2																
0250-4016	Bridge F2B - Pier F4B Segment - 7 nos. - Mould 2	23	25-Feb-17	23-Mar-17	Bridge F2B - Pier F4B Segment - 7 nos. - Mould 2																
0250-4017	Bridge F1B2 - Pier D12 Segment - 6 nos.- Mould 2	24	24-Mar-17	24-Apr-17	Bridge F1B2 - Pier D12 Segment - 6 nos.- Mould 2																
0250-4018	Bridge F1B2 - Pier F2B Segment - 6 nos. - Mould 2	23	25-Apr-17	22-May-17	Bridge F1B2 - Pier F2B Segment - 6 nos. - Mould 2																
0250-4045	Bridge F3B - Pier F6B & F7B Segment - 11 nos. - Mould 1	52	20-Jan-17*	23-Mar-17	Bridge F3B - Pier F6B & F7B Segment - 11 nos. - Mould 1																
0250-4050	Bridge F2B - Pier F4B Segment - 6 nos. - Mould 1	18	24-Mar-17	15-Apr-17	Bridge F2B - Pier F4B Segment - 6 nos. - Mould 1																
0250-4055	Bridge F1B2 - Pier F1B Segment - 6 nos. - Mould 1	20	18-Apr-17	11-May-17	Bridge F1B2 - Pier F1B Segment - 6 nos. - Mould 1																
0250-4100	Bridge F1B1 - Abut D12 Segment - 5 nos. - Mould 3	15	06-Mar-17*	22-Mar-17	Bridge F1B1 - Abut D12 Segment - 5 nos. - Mould 3																
0250-4110	Bridge F1B1 - Pier F1A Segment - 13 nos. - Mould 3	36	23-Mar-17	08-May-17	Bridge F1B1 - Pier F1A Segment - 13 nos. - Mould 3																
A3160	Delivery of Segments - Bridge F3B	14	11-Mar-17	27-Mar-17	Delivery of Segments - Bridge F3B																
A3170	Delivery of Segments - Bridge F2B	18	28-Mar-17	20-Apr-17	Delivery of Segments - Bridge F2B																
05 - SECTION 2 & 2A OF THE WORKS																					
05.1 - Cut & Cover Tunnel Ch 4855-4932 (APS Footprint)																					
05.1.6 - EVB Sub-structure & Tunnel																					
05.1.7 - EVB & Tunnel Remedial Works																					
A2275	EVB - Rectification of Concrete Defects to Plenum B1-07	12	20-Feb-17	04-Mar-17	EVB - Rectification of Concrete Defects to Plenum B1-07																
A2276	EVB - Rectification of Concrete Defects to Vent Shaft B1-18	5	14-Feb-17	18-Feb-17	EVB - Rectification of Concrete Defects to Vent Shaft B1-18																
A2277	EVB - Rectification of Concrete Defects to Plenum B1-24 & 26	10	02-Feb-17	13-Feb-17	EVB - Rectification of Concrete Defects to Plenum B1-24 & 26																
A2278	EVB - Rectification of Concrete Defects to Plenum B1-23	6	24-Jan-17	01-Feb-17	EVB - Rectification of Concrete Defects to Plenum B1-23																
A2279	EVB - Rectification of Concrete Defects to GL A-E/3-5	3	12-Jan-17 A	23-Jan-17	EVB - Rectification of Concrete Defects to GL A-E/3-5																
A2314	EVB - (South Side) > Make Good D-wall surface (GL 6/M-O)	3	09-Jan-17 A	23-Jan-17	EVB - (South Side) > Make Good D-wall surface (GL 6/M-O)																
A2315	EVB - (North Side) > Make Good D-wall surface (GL 2/E-F)	14	24-Jan-17	10-Feb-17	EVB - (North Side) > Make Good D-wall surface (GL 2/E-F)																

Remaining Level of Effort
 Remaining Work
 Actual Level of Effort
 Critical Remaining Work
 Actual Work
 Milestone

Contract HY/2009/19
Three Months Rolling Programme (20 Jan 2017 to 19 Apr 2017)



- Remaining Level of Effort
- Remaining Work
- Actual Level of Effort
- Critical Remaining Work
- Actual Work
- ◆ Milestone

Contract HY/2009/19
Three Months Rolling Programme (20 Jan 2017 to 19 Apr 2017)

Activity ID	Activity Name	Rem Dur	Start	Finish	2017																	
					January						February				March				April			
					5	12	19	26	03	10	5	12	19	26	02	09	16	23				
Bridge C1																						
Outstanding Works Between Bridge C1 & E																						
A4530	Pier 17 to 18 - Steel Mould Erection	2	20-Jan-17	21-Jan-17	■ Pier 17 to 18 - Steel Mould Erection																	
A4550	Pier 17 to 18 - Concreting	1	23-Jan-17	23-Jan-17	■ Pier 17 to 18 - Concreting																	
A4570	Pier 16 to 17 - Forwork Erection	2	20-Jan-17	21-Jan-17	■ Pier 16 to 17 - Forwork Erection																	
A4590	Pier 16 to 17 - Rebar Bending	2	20-Jan-17	21-Jan-17	■ Pier 16 to 17 - Rebar Bending																	
A4610	Pier 16 to 17 - Rebar Fixing	2	23-Jan-17	24-Jan-17	■ Pier 16 to 17 - Rebar Fixing																	
A4630	Pier 16 to 17 - Steel Mould Erection	2	25-Jan-17	26-Jan-17	■ Pier 16 to 17 - Steel Mould Erection																	
A4650	Pier 16 to 17 - Concreting	1	27-Jan-17	27-Jan-17	■ Pier 16 to 17 - Concreting																	
A4670	Pier 15 to 16 - Forwork Erection	2	24-Jan-17	25-Jan-17	■ Pier 15 to 16 - Forwork Erection																	
A4690	Pier 15 to 16 - Rebar Bending	2	24-Jan-17	25-Jan-17	■ Pier 15 to 16 - Rebar Bending																	
A4710	Pier 15 to 16 - Rebar Fixing	2	26-Jan-17	27-Jan-17	■ Pier 15 to 16 - Rebar Fixing																	
A4730	Pier 15 to 16 - Steel Mould Erection	2	31-Jan-17	01-Feb-17	■ Pier 15 to 16 - Steel Mould Erection																	
A4750	Pier 15 to 16 - Concreting	1	02-Feb-17	02-Feb-17	■ Pier 15 to 16 - Concreting																	
A4770	Temp Lighting (2 Nos)	2	07-Feb-17	08-Feb-17	■ Temp Lighting (2 Nos)																	
A4790	Noise Barrier Const. Pier E1 to D1	12	20-Jan-17	04-Feb-17	■ Noise Barrier Const. Pier E1 to D1																	
A4810	Noise Barrier Const. Pier 18 to 19	13	06-Feb-17	20-Feb-17	■ Noise Barrier Const. Pier 18 to 19																	
A4830	Noise Barrier Const. Pier 17 to 18	12	21-Feb-17	06-Mar-17	■ Noise Barrier Const. Pier 17 to 18																	
A4850	Paving & Road Marking	2	07-Mar-17	08-Mar-17	■ Paving & Road Marking																	
10.3 - Middle Bridge (Bridge F)																						
10.3.1 - Pier Construction																						
Pier F1B2 to F4B																						
1031-1440	Existing P39/F4B Prepare C.J.	7	04-Apr-17	12-Apr-17	■ Existing P39/F4B Prepare C.J.																	
1031-1460	Existing P39/F4B Construct Pier/Column	14	13-Apr-17	02-May-17	■ Existing P39/F4B Construct Pier/Column																	
Pier F5B to F8B																						
1031-1520	Existing P40/F5B Prepare C.J.	6	21-Mar-17	27-Mar-17	■ Existing P40/F5B Prepare C.J.																	
1031-1540	Existing P40/F5B Construct Pier/Column	14	28-Mar-17	13-Apr-17	■ Existing P40/F5B Construct Pier/Column																	
1031-1600	Existing P41/F6B Prepare C.J.	6	07-Mar-17	13-Mar-17	■ Existing P41/F6B Prepare C.J.																	
1031-1620	Existing P41/F6B Construct Pier/Column	14	14-Mar-17	29-Mar-17	■ Existing P41/F6B Construct Pier/Column																	
1031-1640	Existing P41/F6B Construct Crosshead	18	30-Mar-17	22-Apr-17	■ Existing P41/F6B Construct Crosshead																	
1031-1680	Existing P42/F7B Prepare C.J.	6	21-Feb-17	27-Feb-17	■ Existing P42/F7B Prepare C.J.																	
1031-1700	Existing P42/F7B Construct Pier/Column	14	28-Feb-17	15-Mar-17	■ Existing P42/F7B Construct Pier/Column																	
1031-1720	Existing P42/F7B Construct Crosshead	18	16-Mar-17	06-Apr-17	■ Existing P42/F7B Construct Crosshead																	

■ Remaining Level of Effort ■ Remaining Work
■ Actual Level of Effort ■ Critical Remaining Work
■ Actual Work ◆ Milestone

Contract HY/2009/19
Three Months Rolling Programme (20 Jan 2017 to 19 Apr 2017)

Activity ID	Activity Name	Rem Dur	Start	Finish	2017															
					January					February				March				April		
					5	12	19	26	31	5	12	19	26	5	12	19	26	02	09	16
A3240	Demolish Four(4nos) Beams at Pier 42-41 - by LG-BM	2	08-Feb-17	09-Feb-17						■										■ Demolish Four(4nos) Beams at Pier 42-41 - by LG-BM
A3250	Demolish Pier + Steel Support at Pier 42	9	10-Feb-17	20-Feb-17						■										■ Demolish Pier + Steel Support at Pier 42
A3260	Launch LG-BM to next Bridge Span	1	21-Feb-17	21-Feb-17																■ Launch LG-BM to next Bridge Span
A3270	Demolish Four(4nos) Beams at Pier 41-40 - by LG-BM	2	22-Feb-17	23-Feb-17																■ Demolish Four(4nos) Beams at Pier 41-40 - by LG-BM
A3280	Demolish Pier + Steel Support at Pier 41	9	24-Feb-17	06-Mar-17																■ Demolish Pier + Steel Support at Pier 41
A3290	Launch LG-BM to next Bridge Span	1	07-Mar-17	07-Mar-17																■ Launch LG-BM to next Bridge Span
A3300	Demolish Four(4nos) Beams at Pier 40-39 - by LG-BM	2	08-Mar-17	09-Mar-17																■ Demolish Four(4nos) Beams at Pier 40-39 - by LG-BM
A3310	Demolish Pier + Steel Support at Pier 40	9	10-Mar-17	20-Mar-17																■ Demolish Pier + Steel Support at Pier 40
A3320	Launch LG-BM to next Bridge Span	1	21-Mar-17	21-Mar-17																■ Launch LG-BM to next Bridge Span
A3330	Demolish Four(4nos) Beams at Pier 39-38 - by LG-BM	2	22-Mar-17	23-Mar-17																■ Demolish Four(4nos) Beams at Pier 39-38 - by LG-BM
A3340	Demolish Pier + Steel Support at Pier 39	9	24-Mar-17	03-Apr-17																■ Demolish Pier + Steel Support at Pier 39
A3350	Launch LG-BM to next Bridge Span	1	04-Apr-17	04-Apr-17																■ Launch LG-BM to next Bridge Span
A3360	Demolish Four(4nos) Beams at Pier 38-37 - by LG-BM	2	06-Apr-17	07-Apr-17																■ Demolish Four(4nos) Beams at Pier 38-37 - by LG-BM
A3370	Demolish Pier + Steel Support at Pier 38	9	08-Apr-17	20-Apr-17																■ Demolish Pier + Steel Support at Pier 38
10.5 - Temporary Bridge																				
10.5.2 - Temporary Bridge 'TB'																				
1052-1260	TB > Demolition of Temporary Bridge "TB"	27	25-Mar-17	28-Apr-17																■ TB Demolition
A4140	TTA Implementation prior to Demolition	14	09-Mar-17	24-Mar-17																■ TTA Implementation prior to Demolition
10.6 - Tunnel Approach Ramp																				
10.6.1 - Approach Ramp (Excluding Portion IIB)																				
Piling Works																				
1061-3490	Moving Temp Car Park to Permanent Car Park Completed	0		18-Apr-17																◆ Moving Temp Car Park
1061-3495	Modify Contractor's Temp Site Office	28	13-Mar-17	18-Apr-17																■ Modify Contractor's Temp Site Office
1061-3500	Pre Bored H-Pile > Pile Ramp - BM03 A	4	18-Apr-17	21-Apr-17																■ Pre Bored H-Pile > Pile Ramp - BM03 A
Excavation & ELS Works																				
1061-4901.1	Sheet Piling Works (WF2>B1:46m@1.5m/d) (including Re-boring for remedial works)	27	10-Oct-16 A	22-Feb-17																■ Sheet Piling Works (WF2>B1:46m@1.5m/d) (including Re-boring for remedial works)
1061-4901.2	Sheet Piling Works (WF1>B3:19m@1.5m/d) (including Re-boring for remedial works)	41	12-Jul-16 A	10-Mar-17																■ Sheet Piling Works (WF1>B3:19m@1.5m/d) (including Re-boring for remedial works)
1061-4910	Advance Sheet Piling Works + Pre-drilling in Phase 2 - Cul de sac Area (30m)	14	11-Mar-17	27-Mar-17																■ Advance Sheet Piling Works + Pre-drilling in Phase 2 - Cul de sac Area (30m)
1061-4915	Tam Grouting	43	14-Sep-16 A	13-Mar-17																■ Tam Grouting
1061-5040	Recharge Well Installation (8Nos)	0	22-Dec-16 A	10-Jan-17 A																■ Recharge Well Installation (8Nos)
1061-5060	Dewatering Well Installation (14Nos)	18	11-Jan-17 A	11-Feb-17																■ Dewatering Well Installation (14Nos)
1061-5080	Observation Well Installation (10Nos)	15	13-Feb-17	01-Mar-17																■ Observation Well Installation (10Nos)

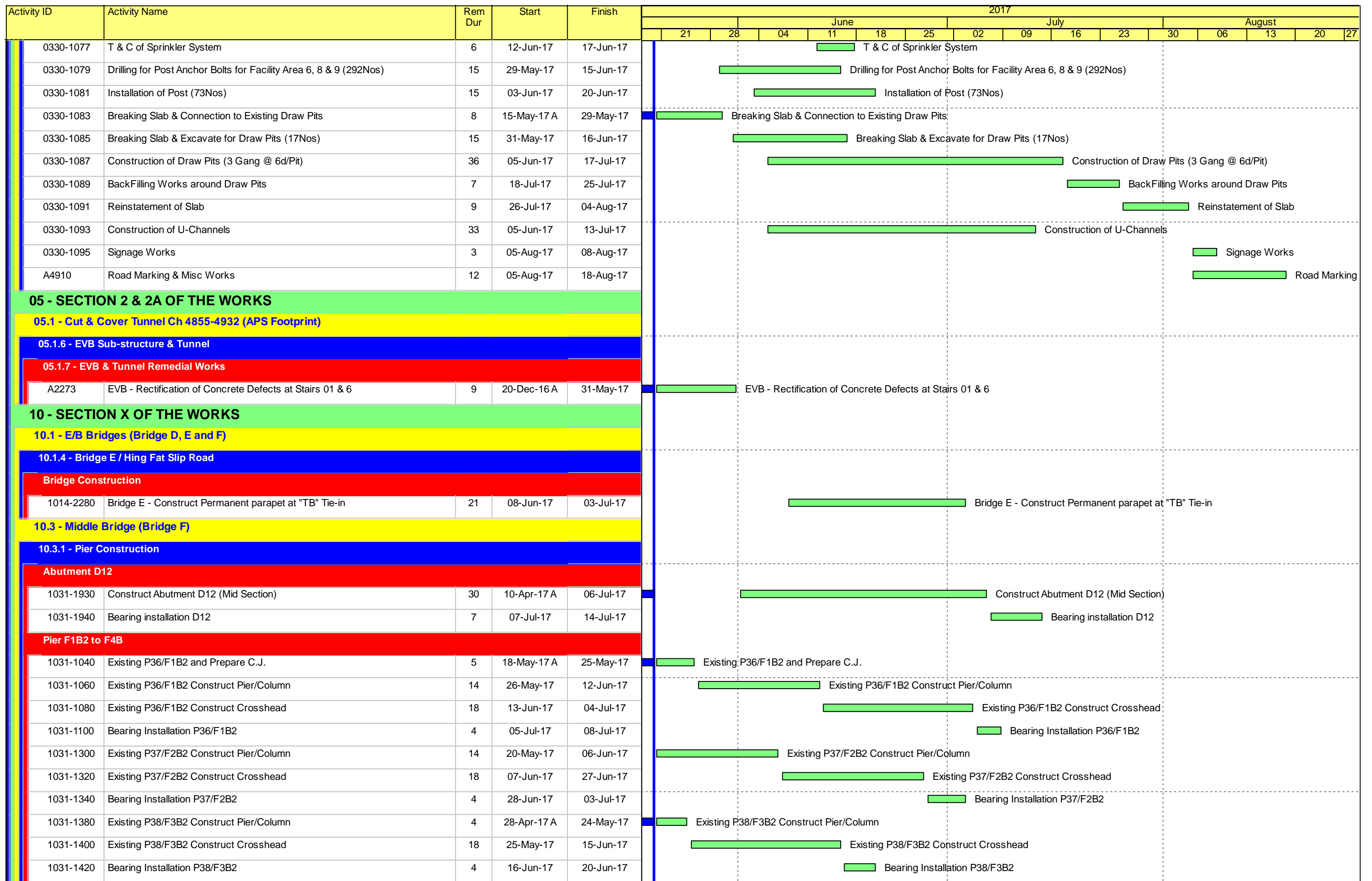
Remaining Level of Effort	Remaining Work
Actual Level of Effort	Critical Remaining Work
Actual Work	Milestone

Contract HY/2009/19
Three Months Rolling Programme (20 Jan 2017 to 19 Apr 2017)

Activity ID	Activity Name	Rem Dur	Start	Finish	2017													
					June					July				August				
					21	28	04	11	18	25	02	09	16	23	30	06	13	20
3MRP - May 2017 to Aug 2017																		
02 - PRE-CONSTRUCTION WORKS																		
02.5 - Bridge Segment/Beam Off-site Precasting																		
0250-4018	Bridge F1B2 - Pier F2B Segment - 6 nos. - Mould 2	2	25-Apr-17 A	22-May-17	■ Bridge F1B2 - Pier F2B Segment - 6 nos. - Mould 2													
0250-4019	Bridge F1B2 - Pier F3B Segment - 5 nos. - Mould 2	14	23-May-17	08-Jun-17	■ Bridge F1B2 - Pier F3B Segment - 5 nos. - Mould 2													
0250-4057	Bridge F1B2 - Abut D12 Segment - 6 nos. - Mould 1	11	12-May-17 A	02-Jun-17	■ Bridge F1B2 - Abut D12 Segment - 6 nos. - Mould 1													
0250-4059	Bridge F1B2 - Pier F2B Segment - 5 nos. - Mould 1	13	03-Jun-17	17-Jun-17	■ Bridge F1B2 - Pier F2B Segment - 5 nos. - Mould 1													
0250-4110	Bridge F1B1 - Pier F1A Segment - 13 nos. - Mould 3	14	24-Apr-17 A	06-Jun-17	■ Bridge F1B1 - Pier F1A Segment - 13 nos. - Mould 3													
0250-4115	Bridge F1B1 - Pier F2A Segment - 11nos. - Mould 3	8	09-May-17 A	15-Jun-17	■ Bridge F1B1 - Pier F2A Segment - 11nos. - Mould 3													
0250-4120	Bridge F1B1 - Pier F3A Segment - 6 nos. - Mould 3	17	16-Jun-17	06-Jul-17	■ Bridge F1B1 - Pier F3A Segment - 6 nos. - Mould 3													
A3180	Delivery of Segments - Bridge F1B2	18	01-Jun-17	21-Jun-17	■ Delivery of Segments - Bridge F1B2													
A3190	Delivery of Segments - Bridge F1B1	18	16-Jun-17	07-Jul-17	■ Delivery of Segments - Bridge F1B1													
03 - PRELIMINARY WORKS																		
03.3 - Interface Works																		
FEHD Permanent Depot																		
0330-1023	Drilling & Base Plate Installation (M25 - 104Nos)	12	16-May-17 A	03-Jun-17	■ Drilling & Base Plate Installation (M25 - 104Nos)													
0330-1025	Installation of Pole (25Nos)	13	23-May-17	07-Jun-17	■ Installation of Pole (25Nos)													
0330-1027	Installation of Beams (77Nos)	26	24-May-17	23-Jun-17	■ Installation of Beams (77Nos)													
0330-1029	Installation of Bondek (Soffit Formworks)	12	16-Jun-17	29-Jun-17	■ Installation of Bondek (Soffit Formworks)													
0330-1031	Rebar Fixing	7	23-Jun-17	30-Jun-17	■ Rebar Fixing													
0330-1033	Edges Formworks	2	29-Jun-17	30-Jun-17	■ Edges Formworks													
0330-1035	Concreting of Deck	3	03-Jul-17	05-Jul-17	■ Concreting of Deck													
0330-1043	Construction of Brace Footing	5	20-May-17	25-May-17	■ Construction of Brace Footing													
0330-1047	Erection of Bracing Beam (3Nos)	3	26-May-17	29-May-17	■ Erection of Bracing Beam (3Nos)													
0330-1049	Touch-up Painting	12	02-Jun-17	15-Jun-17	■ Touch-up Painting													
0330-1051	Waterproofing & Slab Reinstatement	7	31-May-17	07-Jun-17	■ Waterproofing & Slab Reinstatement													
0330-1055	Construction of Lamp Pole Footing (12Nos)	21	20-May-17	14-Jun-17	■ Construction of Lamp Pole Footing (12Nos)													
0330-1057	Drilling for Lamp Pole at Existing Slab (8Nos Poles; M16-64Nos)	8	26-May-17	05-Jun-17	■ Drilling for Lamp Pole at Existing Slab (8Nos Poles; M16-64Nos)													
0330-1059	Installation of Lamp Pole (total 20Nos)	14	01-Jun-17	16-Jun-17	■ Installation of Lamp Pole (total 20Nos)													
0330-1061	Breaking Existing Slab for Cross Road Ducting (Approx 300m)	18	02-Jun-17	22-Jun-17	■ Breaking Existing Slab for Cross Road Ducting (Approx 300m)													
0330-1063	Laying Duct	5	23-Jun-17	28-Jun-17	■ Laying Duct													
0330-1065	Cabling Works	9	29-Jun-17	10-Jul-17	■ Cabling Works													
0330-1067	Slab Reinstatement	8	11-Jul-17	19-Jul-17	■ Slab Reinstatement													
0330-1069	Drilling for Post Anchor Bolts for Facility Area 5 & 10 (172Nos)	6	15-May-17 A	26-May-17	■ Drilling for Post Anchor Bolts for Facility Area 5 & 10 (172Nos)													
0330-1071	Installation of Post (43Nos)	9	20-May-17	31-May-17	■ Installation of Post (43Nos)													
0330-1073	Construction of Steel Roof	9	25-May-17	05-Jun-17	■ Construction of Steel Roof													
0330-1075	Sprinkler System Installation	10	31-May-17	10-Jun-17	■ Sprinkler System Installation													

■ Remaining Level of Effort ■ Remaining Work
■ Actual Level of Effort ■ Critical Remaining Work
■ Actual Work ◆ ◆ Milestone

Contract HY/2009/19
Three Months Rolling Programme (20 May 2017 to 19 August 2017)



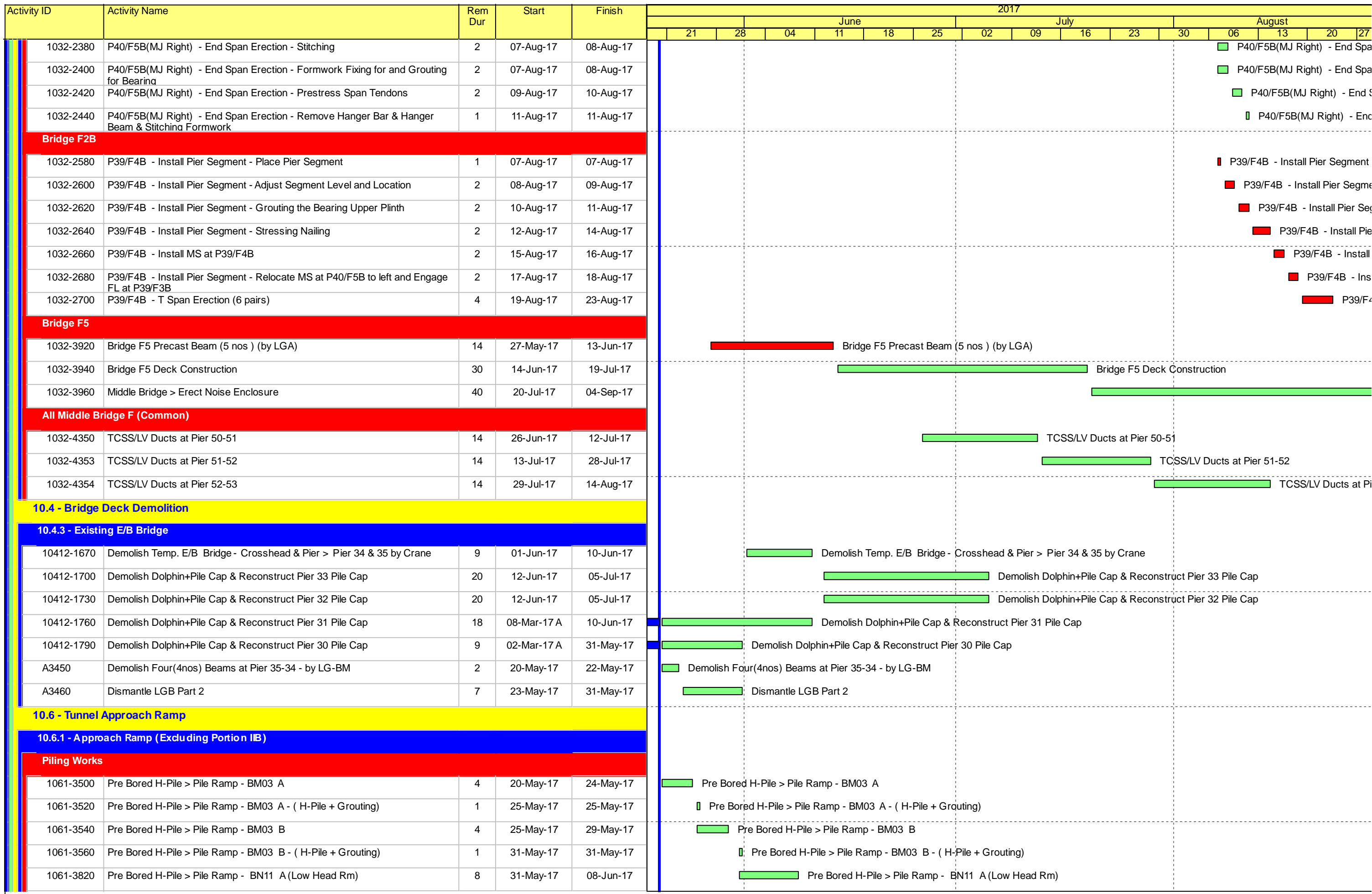
█ Remaining Level of Effort █ Remaining Work
█ Actual Level of Effort █ Critical Remaining Work
█ Actual Work ◆ ◆ Milestone

Contract HY/2009/19
Three Months Rolling Programme (20 May 2017 to 19 August 2017)

Activity ID	Activity Name	Rem Dur	Start	Finish	2017													
					June					July				August				
					21	28	04	11	18	25	02	09	16	23	30	06	13	20
1031-1460	Existing P39/F4B Construct Pier/Column	2	14-Apr-17 A	22-May-17	Existing P39/F4B Construct Pier/Column													
1031-1480	Existing P39/F4B Construct Crosshead	18	23-May-17	13-Jun-17	Existing P39/F4B Construct Crosshead													
1031-1500	Bearing Installation P39/F4B	4	14-Jun-17	17-Jun-17	Bearing Installation P39/F4B													
Pier F5B to F8B																		
1031-1560	Existing P40/F5B Construct Crosshead	18	27-Apr-17 A	10-Jun-17	Existing P40/F5B Construct Crosshead													
1031-1580	Bearing Installation P40/F5B	4	12-Jun-17	15-Jun-17	Bearing Installation P40/F5B													
1031-1660	Bearing Installation P41/F6B	4	20-May-17	24-May-17	Bearing Installation P41/F6B													
1031-1740	Bearing Installation P42/F7B	2	10-May-17 A	22-May-17	Bearing Installation P42/F7B													
10.3.2 - Bridge Construction																		
Bridge F3B																		
1032-1840	LG-A Launching - Engage FL at F7B/Pier42	2	25-May-17	26-May-17	LG-A Launching - Engage FL at F7B/Pier42													
1032-1860	P42/F7B - Install Pier Segment - Place Pier Segment	1	14-Jun-17	14-Jun-17	P42/F7B - Install Pier Segment - Place Pier Segment													
1032-1880	P42/F7B - Install Pier Segment - Adjust Segment Level and Location	2	15-Jun-17	16-Jun-17	P42/F7B - Install Pier Segment - Adjust Segment Level and Location													
1032-1900	P42/F7B - Install Pier Segment - Grouting the Bearing Upper Plinth	2	17-Jun-17	19-Jun-17	P42/F7B - Install Pier Segment - Grouting the Bearing Upper Plinth													
1032-1920	P42/F7B - Install Pier Segment - Stressing Nailing	2	20-Jun-17	21-Jun-17	P42/F7B - Install Pier Segment - Stressing Nailing													
1032-1940	LG-A Launching - Install MS at P42/F7B	1	22-Jun-17	22-Jun-17	LG-A Launching - Install MS at P42/F7B													
1032-1960	LG-A Launching - Deactivate the MS at F9B/Pier44 and Engage FL at P41/F6B	2	23-Jun-17	24-Jun-17	LG-A Launching - Deactivate the MS at F9B/Pier44 and Engage FL at P41/F6B													
1032-1980	P41/F6B - Install Pier Segment - Place Pier Segment	1	26-Jun-17	26-Jun-17	P41/F6B - Install Pier Segment - Place Pier Segment													
1032-2000	P41/F6B - Install Pier Segment - Adjust Segment Level and Location	2	27-Jun-17	28-Jun-17	P41/F6B - Install Pier Segment - Adjust Segment Level and Location													
1032-2020	P41/F6B - Install Pier Segment - Grouting the Bearing Upper Plinth	2	29-Jun-17	30-Jun-17	P41/F6B - Install Pier Segment - Grouting the Bearing Upper Plinth													
1032-2040	P41/F6B - Install Pier Segment - Stressing Nailing	2	03-Jul-17	04-Jul-17	P41/F6B - Install Pier Segment - Stressing Nailing													
1032-2060	P41/F6B - Install Pier Segment - Install MS at F6B/Pier41	1	05-Jul-17	05-Jul-17	P41/F6B - Install Pier Segment - Install MS at F6B/Pier41													
1032-2080	P42/F7B - T Span Erection (5 pairs)	4	06-Jul-17	10-Jul-17	P42/F7B - T Span Erection (5 pairs)													
1032-2100	P43/F8B(MJ Left) - End Span Erection - Hanging Segments	3	11-Jul-17	13-Jul-17	P43/F8B(MJ Left) - End Span Erection - Hanging Segments													
1032-2120	P43/F8B(MJ Left) - End Span Erection - Erect Segments	1	14-Jul-17	14-Jul-17	P43/F8B(MJ Left) - End Span Erection - Erect Segments													
1032-2140	P43/F8B(MJ Left) - End Span Erection - Stitching	2	15-Jul-17	17-Jul-17	P43/F8B(MJ Left) - End Span Erection - Stitching													
1032-2160	P43/F8B(MJ Left) - End Span Erection - Formwork Fixing for and Grouting for Bearing	2	15-Jul-17	17-Jul-17	P43/F8B(MJ Left) - End Span Erection - Formwork Fixing for and Grouting for Bearing													
1032-2180	P43/F8B(MJ Left) - End Span Erection - Prestress Span Tendons	2	18-Jul-17	19-Jul-17	P43/F8B(MJ Left) - End Span Erection - Prestress Span Tendons													
1032-2200	P43/F8B(MJ Left) - End Span Erection - Remove Hanger Bar & Hanger Beam & Stitching Formwork	1	20-Jul-17	20-Jul-17	P43/F8B(MJ Left) - End Span Erection - Remove Hanger Bar & Hanger Beam & Stitching Formwork													
1032-2220	LG-A Launching - Deactivate the MS at F8B/Pier43 and Engage FL at P40/F5B	2	21-Jul-17	22-Jul-17	LG-A Launching - Deactivate the MS at F8B/Pier43 and Engage FL at P40/F5B													
1032-2240	P41/F6B - T Span Erection (6 pairs)	4	24-Jul-17	27-Jul-17	P41/F6B - T Span Erection (6 pairs)													
1032-2260	P40/F5B - Install Pier Segment - Place Pier Segment (2nos.)	2	24-Jul-17	25-Jul-17	P40/F5B - Install Pier Segment - Place Pier Segment													
1032-2280	P40/F5B - Install Pier Segment - Adjust Segment Level and Location	3	26-Jul-17	28-Jul-17	P40/F5B - Install Pier Segment - Adjust Segment													
1032-2300	P40/F5B - Install Pier Segment - Install the Tie & Packing System	2	29-Jul-17	31-Jul-17	P40/F5B - Install Pier Segment - Install the													
1032-2320	P40/F5B - Install Pier Segment - Install MS at P40/F5B (Right) and Engage FL at P39/F4B	2	01-Aug-17	02-Aug-17	P40/F5B - Install Pier Segment - Install													
1032-2340	P40/F5B(MJ Right) - End Span Erection - Hanging Segments	2	03-Aug-17	04-Aug-17	P40/F5B(MJ Right) - End Span Erection													
1032-2360	P40/F5B(MJ Right) - End Span Erection - Erect Segments	1	05-Aug-17	05-Aug-17	P40/F5B(MJ Right) - End Span Erection													

Remaining Level of Effort Remaining Work
 Actual Level of Effort Critical Remaining Work
 Actual Work Milestone

Contract HY/2009/19
Three Months Rolling Programme (20 May 2017 to 19 August 2017)



■ Remaining Level of Effort ■ Remaining Work
■ Actual Level of Effort ■ Critical Remaining Work
■ Actual Work ◆ Milestone

Contract HY/2009/19
Three Months Rolling Programme (20 May 2017 to 19 August 2017)

Activity ID	Activity Name	Rem Dur	Start	Finish	2017															
					June						July				August					
					21	28	04	11	18	25	02	09	16	23	30	06	13	20	27	
1061-3840	Pre Bored H-Pile > Pile Ramp - BN11 A - (H-Pile + Grouting)	1	09-Jun-17	09-Jun-17	■ Pre Bored H-Pile > Pile Ramp - BN11 A - (H-Pile + Grouting)															
1061-3860	Pre Bored H-Pile > Pile Ramp - BN11 B (LHR)	8	31-May-17	08-Jun-17	■ Pre Bored H-Pile > Pile Ramp - BN11 B (LHR)															
1061-3880	Pre Bored H-Pile > Pile Ramp - BN11 B - (H-Pile + Grouting)	1	09-Jun-17	09-Jun-17	■ Pre Bored H-Pile > Pile Ramp - BN11 B - (H-Pile + Grouting)															
1061-3900	Pre Bored H-Pile > Pile Ramp - BN12 A (LHR)	8	09-Jun-17	17-Jun-17	■ Pre Bored H-Pile > Pile Ramp - BN12 A (LHR)															
1061-3920	Pre Bored H-Pile > Pile Ramp - BN12 A - (H-Pile + Grouting)	1	19-Jun-17	19-Jun-17	■ Pre Bored H-Pile > Pile Ramp - BN12 A - (H-Pile + Grouting)															
1061-3940	Pre Bored H-Pile > Pile Ramp - BN12 B (LHR)	8	09-Jun-17	17-Jun-17	■ Pre Bored H-Pile > Pile Ramp - BN12 B (LHR)															
1061-3960	Pre Bored H-Pile > Pile Ramp - BN12 B - (H-Pile + Grouting)	1	19-Jun-17	19-Jun-17	■ Pre Bored H-Pile > Pile Ramp - BN12 B - (H-Pile + Grouting)															
1061-3980	Pre Bored H-Pile > Pile Ramp - BN13 A (LHR)	8	19-Jun-17	27-Jun-17	■ Pre Bored H-Pile > Pile Ramp - BN13 A (LHR)															
1061-4000	Pre Bored H-Pile > Pile Ramp - BN13 A - (H-Pile + Grouting)	1	28-Jun-17	28-Jun-17	■ Pre Bored H-Pile > Pile Ramp - BN13 A - (H-Pile + Grouting)															
1061-4020	Pre Bored H-Pile > Pile Ramp - BN13 B (LHR)	8	19-Jun-17	27-Jun-17	■ Pre Bored H-Pile > Pile Ramp - BN13 B (LHR)															
1061-4040	Pre Bored H-Pile > Pile Ramp - BN13 B - (H-Pile + Grouting)	1	28-Jun-17	28-Jun-17	■ Pre Bored H-Pile > Pile Ramp - BN13 B - (H-Pile + Grouting)															
1061-4060	Pre Bored H-Pile > Pile Ramp - BN01 A (LHR)	8	28-Jun-17	07-Jul-17	■ Pre Bored H-Pile > Pile Ramp - BN01 A (LHR)															
1061-4080	Pre Bored H-Pile > Pile Ramp - BN01 A - (H-Pile + Grouting)	1	08-Jul-17	08-Jul-17	■ Pre Bored H-Pile > Pile Ramp - BN01 A - (H-Pile + Grouting)															
1061-4100	Pre Bored H-Pile > Pile Ramp - BN01 B (LHR)	8	28-Jun-17	07-Jul-17	■ Pre Bored H-Pile > Pile Ramp - BN01 B (LHR)															
1061-4120	Pre Bored H-Pile > Pile Ramp - BN01 B - (H-Pile + Grouting)	1	08-Jul-17	08-Jul-17	■ Pre Bored H-Pile > Pile Ramp - BN01 B - (H-Pile + Grouting)															
1061-4140	Pre Bored H-Pile > Pile Ramp - BN05 A (LHR)	8	08-Jul-17	17-Jul-17	■ Pre Bored H-Pile > Pile Ramp - BN05 A (LHR)															
1061-4160	Pre Bored H-Pile > Pile Ramp - BN05 A - (H-Pile + Grouting)	1	18-Jul-17	18-Jul-17	■ Pre Bored H-Pile > Pile Ramp - BN05 A - (H-Pile + Grouting)															
1061-4180	Pre Bored H-Pile > Pile Ramp - BN05 B (LHR)	8	08-Jul-17	17-Jul-17	■ Pre Bored H-Pile > Pile Ramp - BN05 B (LHR)															
1061-4200	Pre Bored H-Pile > Pile Ramp - BN05 B - (H-Pile + Grouting)	1	18-Jul-17	18-Jul-17	■ Pre Bored H-Pile > Pile Ramp - BN05 B - (H-Pile + Grouting)															
1061-4220	Pre Bored H-Pile > Pile Ramp - BN06 A (LHR)	8	18-Jul-17	26-Jul-17	■ Pre Bored H-Pile > Pile Ramp - BN06 A (LHR)															
1061-4240	Pre Bored H-Pile > Pile Ramp - BN06 A - (H-Pile + Grouting)	1	27-Jul-17	27-Jul-17	■ Pre Bored H-Pile > Pile Ramp - BN06 A - (H-Pile + Grouting)															
1061-4260	Pre Bored H-Pile > Pile Ramp - BN06 B (LHR)	8	18-Jul-17	26-Jul-17	■ Pre Bored H-Pile > Pile Ramp - BN06 B (LHR)															
1061-4280	Pre Bored H-Pile > Pile Ramp - BN06 B - (H-Pile + Grouting)	1	27-Jul-17	27-Jul-17	■ Pre Bored H-Pile > Pile Ramp - BN06 B - (H-Pile + Grouting)															
1061-4300	Remaining Bored Piles & Pre-Bored H-Pile Testing	30	22-Jun-17	27-Jul-17	■ Remaining Bored Piles & Pre-Bored H-Pile Testing															
Excavation & ELS Works																				
1061-4910	Advance Sheet Piling Works + Pre-drilling in Phase 2 - Cul de sac Area (30m)	14	04-Apr-17 A	06-Jun-17	■ Advance Sheet Piling Works + Pre-drilling in Phase 2 - Cul de sac Area (30m)															
1061-5100	Pumping Test	9	16-May-17 A	31-May-17	■ Pumping Test															
1061-5120	Complete Pump Test	0		31-May-17	◆ Complete Pump Test															
1061-5180	Ch 5234 - 5285 > Install 1st Layer of Strut & Waling	7	24-Apr-17 A	27-May-17	■ Ch 5234 - 5285 > Install 1st Layer of Strut & Waling															
1061-5200	Ch 5234 - 5285 > Excav from 2.5mPD to 1m Below 2nd Layer of Struts	16	01-Jun-17	19-Jun-17	■ Ch 5234 - 5285 > Excav from 2.5mPD to 1m Below 2nd Layer of Struts															
1061-5220	Ch 5234 - 5285 > Install 2nd Layer of Strut & Waling	9	20-Jun-17	29-Jun-17	■ Ch 5234 - 5285 > Install 2nd Layer of Strut & Waling															
1061-5240	Ch 5234 - 5285 > Excav to FEL	13	30-Jun-17	15-Jul-17	■ Ch 5234 - 5285 > Excav to FEL															
Structure Works																				
1061-5260	Bay 1 - Ch 5322 - 5331 > Base Slab - Blinding Layer	1	20-Jun-17	20-Jun-17	■ Bay 1 - Ch 5322 - 5331 > Base Slab - Blinding Layer															
1061-5280	Bay 1 - Ch 5322 - 5331 > Base Slab - Water Proofing Membrane	2	21-Jun-17	22-Jun-17	■ Bay 1 - Ch 5322 - 5331 > Base Slab - Water Proofing Membrane															
1061-5300	Bay 1 - Ch 5322 - 5331 > Base Slab - Rebar Fixing	5	23-Jun-17	28-Jun-17	■ Bay 1 - Ch 5322 - 5331 > Base Slab - Rebar Fixing															
1061-5320	Bay 1 - Ch 5322 - 5331 > Base Slab - Erect Formworks	4	29-Jun-17	04-Jul-17	■ Bay 1 - Ch 5322 - 5331 > Base Slab - Erect Formworks															

	Remaining Level of Effort		Remaining Work
	Actual Level of Effort		Critical Remaining Work
	Actual Work	◆	Milestone

Contract HY/2009/19
Three Months Rolling Programme (20 May 2017 to 19 August 2017)

Activity ID	Activity Name	Rem Dur	Start	Finish	2017																
					June					July				August							
					21	28	04	11	18	25	02	09	16	23	30	06	13	20	27		
1061-5340	Bay 1 - Ch 5322 - 5331 > Base Slab - Concreting	1	05-Jul-17	05-Jul-17														█	Bay 1 - Ch 5322 - 5331 > Base Slab - Concreting		
1061-5360	Bay 2 - Ch 5313 - 5322 > Base Slab - Blinding Layer	1	06-Jul-17	06-Jul-17														█	Bay 2 - Ch 5313 - 5322 > Base Slab - Blinding Layer		
1061-5380	Bay 2 - Ch 5313 - 5322 > Base Slab - Water Proofing Membrane	2	07-Jul-17	08-Jul-17														█	Bay 2 - Ch 5313 - 5322 > Base Slab - Water Proofing Membrane		
1061-5400	Bay 2 - Ch 5313 - 5322 > Base Slab - Rebar Fixing	5	10-Jul-17	14-Jul-17														█	Bay 2 - Ch 5313 - 5322 > Base Slab - Rebar Fixing		
1061-5420	Bay 2 - Ch 5313 - 5322 > Base Slab - Erect Formworks	4	15-Jul-17	19-Jul-17														█	Bay 2 - Ch 5313 - 5322 > Base Slab - Erect Formworks		
1061-5440	Bay 2 - Ch 5313 - 5322 > Base Slab - Concreting	1	20-Jul-17	20-Jul-17														█	Bay 2 - Ch 5313 - 5322 > Base Slab - Concreting		
1061-5460	Bay 3 - Ch 5303 - 5313 > Base Slab - Blinding Layer	1	21-Jul-17	21-Jul-17														█	Bay 3 - Ch 5303 - 5313 > Base Slab - Blinding Layer		
1061-5480	Bay 3 - Ch 5303 - 5313 > Base Slab - Water Proofing Membrane	2	22-Jul-17	24-Jul-17														█	Bay 3 - Ch 5303 - 5313 > Base Slab - Water Proofing Membrane		
1061-5500	Bay 3 - Ch 5303 - 5313 > Base Slab - Rebar Fixing	5	25-Jul-17	29-Jul-17														█	Bay 3 - Ch 5303 - 5313 > Base Slab - Rebar Fixing		
1061-5520	Bay 3 - Ch 5303 - 5313 > Base Slab - Erect Formworks	4	31-Jul-17	03-Aug-17														█	Bay 3 - Ch 5303 - 5313 > Base Slab - Erect Formworks		
1061-5540	Bay 3 - Ch 5303 - 5313 > Base Slab - Concreting	1	04-Aug-17	04-Aug-17														█	Bay 3 - Ch 5303 - 5313 > Base Slab - Concreting		
1061-5560	Bay 6 - Ch 5262 - 5277 > Base Slab - Blinding Layer	1	17-Jul-17	17-Jul-17														█	Bay 6 - Ch 5262 - 5277 > Base Slab - Blinding Layer		
1061-5580	Bay 6 - Ch 5262 - 5277 > Base Slab - Water Proofing Membrane	2	18-Jul-17	19-Jul-17														█	Bay 6 - Ch 5262 - 5277 > Base Slab - Water Proofing Membrane		
1061-5600	Bay 6 - Ch 5262 - 5277 > Base Slab - Rebar Fixing	6	20-Jul-17	26-Jul-17														█	Bay 6 - Ch 5262 - 5277 > Base Slab - Rebar Fixing		
1061-5620	Bay 6 - Ch 5262 - 5277 > Base Slab - Erect Formworks	4	27-Jul-17	31-Jul-17														█	Bay 6 - Ch 5262 - 5277 > Base Slab - Erect Formworks		
1061-5640	Bay 6 - Ch 5262 - 5277 > Base Slab - Concreting	1	01-Aug-17	01-Aug-17														█	Bay 6 - Ch 5262 - 5277 > Base Slab - Concreting		
1061-5660	Bay 5 - Ch 5277 - 5292 > Base Slab - Blinding Layer (WF1)	1	02-Aug-17	02-Aug-17														█	Bay 5 - Ch 5277 - 5292 > Base Slab - Blinding Layer (WF1)		
1061-5680	Bay 5 - Ch 5277 - 5292 > Base Slab - Base Slab - Water Proofing Membrane (WF1)	3	03-Aug-17	05-Aug-17														█	Bay 5 - Ch 5277 - 5292 > Base Slab - Base Slab - Water Proofing Membrane (WF1)		
1061-5700	Bay 5 - Ch 5277 - 5292 > Base Slab - Rebar Fixing (WF1)	6	07-Aug-17	12-Aug-17														█	Bay 5 - Ch 5277 - 5292 > Base Slab - Rebar Fixing (WF1)		
1061-5720	Bay 5 - Ch 5277 - 5292 > Base Slab - Erect Formworks (WF1)	3	14-Aug-17	16-Aug-17														█	Bay 5 - Ch 5277 - 5292 > Base Slab - Erect Formworks (WF1)		
1061-5740	Bay 5 - Ch 5277 - 5292 > Base Slab - Concreting (WF1)	1	17-Aug-17	17-Aug-17														█	Bay 5 - Ch 5277 - 5292 > Base Slab - Concreting (WF1)		
1061-5760	Bay 4 - Ch 5292 - 5303 > Base Slab - Blinding Layer (WF1)	1	18-Aug-17	18-Aug-17														█	Bay 4 - Ch 5292 - 5303 > Base Slab - Blinding Layer (WF1)		
1061-5780	Bay 4 - Ch 5292 - 5303 > Base Slab - Base Slab - Water Proofing Membrane (WF1)	3	19-Aug-17	22-Aug-17														█	Bay 4 - Ch 5292 - 5303 > Base Slab - Base Slab - Water Proofing Membrane (WF1)		
1061-5860	Bay 7 - Ch 5247 - 5262 > Base Slab - Blinding Layer (WF2)	1	02-Aug-17	02-Aug-17														█	Bay 7 - Ch 5247 - 5262 > Base Slab - Blinding Layer (WF2)		
1061-5880	Bay 7 - Ch 5247 - 5262 > Base Slab - Base Slab - Water Proofing Membrane (WF2)	3	03-Aug-17	05-Aug-17														█	Bay 7 - Ch 5247 - 5262 > Base Slab - Base Slab - Water Proofing Membrane (WF2)		
1061-5900	Bay 7 - Ch 5247 - 5262 > Base Slab - Rebar Fixing (WF2)	6	07-Aug-17	12-Aug-17														█	Bay 7 - Ch 5247 - 5262 > Base Slab - Rebar Fixing (WF2)		
1061-5920	Bay 7 - Ch 5247 - 5262 > Base Slab - Erect Formworks (WF2)	3	14-Aug-17	16-Aug-17														█	Bay 7 - Ch 5247 - 5262 > Base Slab - Erect Formworks (WF2)		
1061-5940	Bay 7 - Ch 5247 - 5262 > Base Slab - Concreting (WF2)	1	17-Aug-17	17-Aug-17														█	Bay 7 - Ch 5247 - 5262 > Base Slab - Concreting (WF2)		
1061-5960	Bay 8 - Ch 5232 - 5247 > Base Slab - Blinding Layer (WF2)	1	18-Aug-17	18-Aug-17														█	Bay 8 - Ch 5232 - 5247 > Base Slab - Blinding Layer (WF2)		
1061-5980	Bay 8 - Ch 5232 - 5247 > Base Slab - Base Slab - Water Proofing Membrane (WF2)	3	19-Aug-17	22-Aug-17														█	Bay 8 - Ch 5232 - 5247 > Base Slab - Base Slab - Water Proofing Membrane (WF2)		
Retaining Walls & Trough Structure B,C & D																					
1061-6860	Construct Retaining Wall E Ple Cap (7 nos)	24	06-Mar-17 A	17-Jun-17														█	Construct Retaining Wall E Ple Cap (7 nos)		
1061-6880	Construct Retaining Wall E1 (Ch 5332 - 5371)	18	19-Jun-17	10-Jul-17														█	Construct Retaining Wall E1 (Ch 5332 - 5371)		
1061-6900	Construct Retaining Wall E3 (Ch 5371 - 5398)	18	11-Jul-17	31-Jul-17														█	Construct Retaining Wall E3 (Ch 5371 - 5398)		
1061-6920	Construct Retaining Wall E3 (Ch 5398 - 5419)	18	19-Jun-17	10-Jul-17														█	Construct Retaining Wall E3 (Ch 5398 - 5419)		
10.6.2 - Approach Ramp (Within Portion IIB)																					
Pre-Bored H-Piles																					

- Remaining Level of Effort
- Actual Level of Effort
- Actual Work
- Critical Remaining Work
- Milestone

Contract HY/2009/19
Three Months Rolling Programme (20 May 2017 to 19 August 2017)

Activity ID	Activity Name	Rem Dur	Start	Finish	2017													
					June					July				August				
					21	28	04	11	18	25	02	09	16	23	30	06	13	20
1062-1020	Predrilling for ramp within Portion IIB (14no - 3set)	9	11-May-17 A	31-May-17	Predrilling for ramp within Portion IIB (14no - 3set)													
1062-1040	Approach Ramp Portion IIB Piles Final Report / Founding Level	12	17-May-17 A	03-Jun-17	Approach Ramp Portion IIB Piles Final Report / Founding Level													
1062-1400	Pre Bored H-Pile > Pile Ramp - BS01 A	14	24-May-17	09-Jun-17	Pre Bored H-Pile > Pile Ramp - BS01 A													
1062-1420	Pre Bored H-Pile > Pile Ramp - BS01 B	14	31-May-17	15-Jun-17	Pre Bored H-Pile > Pile Ramp - BS01 B													
1062-1440	Pre Bored H-Pile > Pile Ramp - BS02 A	7	18-May-17 A	13-Jun-17	Pre Bored H-Pile > Pile Ramp - BS02 A													
1062-1460	Pre Bored H-Pile > Pile Ramp - BS02 B	14	09-Jun-17	24-Jun-17	Pre Bored H-Pile > Pile Ramp - BS02 B													
1062-1480	Pre Bored H-Pile > Pile Ramp - BS03 A	14	15-Jun-17	30-Jun-17	Pre Bored H-Pile > Pile Ramp - BS03 A													
1062-1500	Pre Bored H-Pile > Pile Ramp - BS03 B	14	21-Jun-17	07-Jul-17	Pre Bored H-Pile > Pile Ramp - BS03 B													
1062-1520	Pre Bored H-Pile > Pile Ramp - BS04 A	14	27-Jun-17	13-Jul-17	Pre Bored H-Pile > Pile Ramp - BS04 A													
1062-1540	Pre Bored H-Pile > Pile Ramp - BS04 B	14	04-Jul-17	19-Jul-17	Pre Bored H-Pile > Pile Ramp - BS04 B													
1062-1560	Pre Bored H-Pile > Pile Ramp - BS05 A	14	24-May-17	09-Jun-17	Pre Bored H-Pile > Pile Ramp - BS05 A													
1062-1580	Pre Bored H-Pile > Pile Ramp - BS05 B	14	31-May-17	15-Jun-17	Pre Bored H-Pile > Pile Ramp - BS05 B													
1062-1600	Pre Bored H-Pile > Pile Ramp - BS06 A	14	06-Jun-17	21-Jun-17	Pre Bored H-Pile > Pile Ramp - BS06 A													
1062-1620	Pre Bored H-Pile > Pile Ramp - BS06 B	14	12-Jun-17	27-Jun-17	Pre Bored H-Pile > Pile Ramp - BS06 B													
1062-1640	Pre Bored H-Pile > Pile Ramp - BS07 A	14	17-Jun-17	04-Jul-17	Pre Bored H-Pile > Pile Ramp - BS07 A													
1062-1660	Pre Bored H-Pile > Pile Ramp - BS07 B	14	23-Jun-17	10-Jul-17	Pre Bored H-Pile > Pile Ramp - BS07 B													
1062-1680	Pre Bored H-Pile > Pile Ramp - BS08 A	14	29-Jun-17	15-Jul-17	Pre Bored H-Pile > Pile Ramp - BS08 A													
1062-1700	Pre Bored H-Pile > Pile Ramp - BS08 B	14	06-Jul-17	21-Jul-17	Pre Bored H-Pile > Pile Ramp - BS08 B													
1062-1720	Pre Bored H-Pile > Pile Ramp - BS09 A	14	31-May-17	15-Jun-17	Pre Bored H-Pile > Pile Ramp - BS09 A													
1062-1740	Pre Bored H-Pile > Pile Ramp - BS09 B	3	15-May-17 A	08-Jun-17	Pre Bored H-Pile > Pile Ramp - BS09 B													
1062-1760	Pre Bored H-Pile > Pile Ramp - BS10 A	14	06-Jun-17	21-Jun-17	Pre Bored H-Pile > Pile Ramp - BS10 A													
1062-1780	Pre Bored H-Pile > Pile Ramp - BS10 B	14	12-Jun-17	27-Jun-17	Pre Bored H-Pile > Pile Ramp - BS10 B													
1062-1800	Pre Bored H-Pile > Pile Ramp - BS11 A	14	17-Jun-17	04-Jul-17	Pre Bored H-Pile > Pile Ramp - BS11 A													
1062-1820	Pre Bored H-Pile > Pile Ramp - BS11 B	14	23-Jun-17	10-Jul-17	Pre Bored H-Pile > Pile Ramp - BS11 B													
1062-1840	Pre Bored H-Pile > Pile Ramp - BS12 A	14	29-Jun-17	15-Jul-17	Pre Bored H-Pile > Pile Ramp - BS12 A													
1062-1860	Pre Bored H-Pile > Pile Ramp - BS12 B	14	31-May-17	15-Jun-17	Pre Bored H-Pile > Pile Ramp - BS12 B													
1062-1880	Pre Bored H-Pile > Pile Ramp - BS13 A	14	06-Jun-17	21-Jun-17	Pre Bored H-Pile > Pile Ramp - BS13 A													
1062-1900	Pre Bored H-Pile > Pile Ramp - BS13 B	14	12-Jun-17	27-Jun-17	Pre Bored H-Pile > Pile Ramp - BS13 B													
1062-1920	Pre Bored H-Pile > Pile Ramp - BM01 A	14	17-Jun-17	04-Jul-17	Pre Bored H-Pile > Pile Ramp - BM01 A													
1062-1940	Pre Bored H-Pile > Pile Ramp - BM01 B	14	23-Jun-17	10-Jul-17	Pre Bored H-Pile > Pile Ramp - BM01 B													
1062-1960	Pre Bored H-Pile > Pile Ramp - BM02 A	14	29-Jun-17	15-Jul-17	Pre Bored H-Pile > Pile Ramp - BM02 A													
1062-1980	Pre Bored H-Pile > Pile Ramp - BM02 B	14	06-Jul-17	21-Jul-17	Pre Bored H-Pile > Pile Ramp - BM02 B													
ELS																		
A1000	Sheet Pile and Preboring Works	50	08-May-17 A	19-Jul-17	Sheet Pile and Preboring Works													
A1010	Dewatering System and Instrumentation installation	38	29-May-17	13-Jul-17	Dewatering System and Instrumentation installation													
A1020	Pumping Test	6	28-Jul-17	03-Aug-17	Pumping Test													
A1030	Excavation Part 1 (1500m ³ / day)	9	04-Aug-17	14-Aug-17	Excavation Part 1 (1500m ³ / day)													

█ Remaining Level of Effort █ Remaining Work
█ Actual Level of Effort █ Critical Remaining Work
█ Actual Work ◆ ◆ Milestone

Contract HY/2009/19
Three Months Rolling Programme (20 May 2017 to 19 August 2017)

China State Construction Engineering (Hong Kong) Ltd.

Contract No. HY/2009/15 - Central Wan Chai By Pass - Tunnel (Causeway Bay Typhoon Shelter Section)

Activity Name	Start	Finish	2017		
			Apr	May	Jun
Hung Hing Road Resurfacing	1/6/2017	30/6/2017			
Defect works inside tunnel	1/4/2017	30/9/2017			



Activity ID	Activity Name	Remaining Dur	Early Start	Early Finish	Total Float	Activity % Complete	2017				
							Apr	May	Jun	Jul	Aug
HK/2012/08 Works Programme Rev.10(DD 31 March 2017)											
Works for Section Completion											
Construction											
Section II A - CWB Tunnel & Slip Road Structures and Facilities											
CWB D - Slip Road 1 - Trough / Retaining Wall											
CWB D - Slip Road 1 - Trough/Retaining Wall Structure											
SIIA12788	Sec II A - CWB SR1 Trough & RW: jet grout for seepage at SR1 trough	27	11-Mar-17 A	26-Apr-17	48	0%					
SIIA12800	Sec II A - CWB SR1 Trough & RW: Trough Structure - Base Slab & Wall (bay 1)	15	23-May-17	06-Jun-17	59	0%					
SIIA13720	Sec II A - CWB SR1 Trough & RW: Trough Structure - Base Slab & Wall (bay 2)	15	08-May-17	22-May-17	48	0%					
SIIA13740	Sec II A - CWB SR1 Trough & RW: Trough Structure - Base Slab & Wall (bay 3)	15	14-May-17	28-May-17	48	0%					
SIIA13800	Sec II A - CWB SR1 Trough & RW: Retaining Walls RW3 & RW4 (bay 1)	16	29-May-17	13-Jun-17	48	0%					
SIIA13860	Sec II A - CWB SR1 Trough & RW: Retaining Walls RW3 & RW4 (bay 2)	15	03-Jun-17	17-Jun-17	48	0%					
Section III A - Road A2, A4 & A5											
Roadwork & Utilities - Section 1 (L1806 - L1801)											
SIIIA10280	Sec III A - roadwork and utilities section 1 carriageway - Drainage works (TTA Stage 4A, 4B & 4C)	52	10-Apr-17*	15-Jun-17	15	0%					
SIIIA10290	Sec III A - roadwork and utilities section 1 carriageway - TTA Stage 5	15	26-Jun-17*	13-Jul-17	7	0%					
Roadwork & Utilities - Section 2 (L1810 - L1806)											
SIIIA12470	Sec III A - roadwork and utilities section 2 carriageway - Relocate site access	14	29-Jun-17*	15-Jul-17	8	0%					
Roadwork & Utilities - Section 4 (L1406 - L1401)											
SIIIA12930	Sec III A - roadwork and utilities section 4 carriageway - Drainage works (L1406 - L1401)	59	08-May-17*	17-Jul-17	0	0%					
Roadwork & Utilities - Section 5 (L1411 - L1406)											
SIIIA13150	Sec III A - roadwork and utilities section 5 carriageway - Drainage works (L1411 - L1406)	44	25-May-17*	17-Jul-17	0	0%					
Roadwork & Utilities - Section 6 (L1102 - L1411)											
SIIIA13370	Sec III A - roadwork and utilities section 1 carriageway - Drainage works (Culvert L - L1411)	49	10-May-17*	07-Jul-17	14	0%					
Section V - Remaining At-Grade Road; Remove 2nd Stage ITA											
Roadwork & Utilities											
Section 1 (L1504 - L1900)											
SV12420	Sec V - Roadwork & Utilities Section 1 Carriageway - Drainage Works at MVB North	112	16-Mar-17 A	17-Aug-17	57	0%					
SV12450	Sec V - Roadwork & Utilities Section 1 Carriageway - Gully pipe	109	05-May-17	11-Sep-17	57	0%					
Section 2 (L1510 - L1504)											
SV12600	Sec V - Roadwork & Utilities Section 2 Carriageway - Drainage Works (L1501-L1507, L1406B-L1406A,	82	25-May-17*	30-Aug-17	0	0%					
Section 3 (Culvert L - L1504)											
SIV12760	Sec V - Roadwork & Utilities Section 3 Carriageway - Drainage Works (Culvert L - L1504 & L1406B - L1406C)	51	16-Mar-17 A	06-Jun-17	130	0%					
SIV12800	Sec V - Roadwork & Utilities Section 3 Carriageway - Gully pipe (Culvert L - L1504)	30	07-Jun-17	12-Jul-17	130	0%					
Box Culvert L1 & FRP-L - Bay 8											

Data Date:
31-Mar-17

- Current Milestone
- Actual Work
- Critical Remaining Work
- Remaining Work
- Remaining Level of Effort

Three Months Rolling Programme for Non-CRIII (Apr 2017 to Jun 2017)
(Ref. to Works Programme Rev.10)

Date	Revision	Checked	Approved
11-May-17			



Activity ID	Activity Name	Remaining Dur	Early Start	Early Finish	Total Float	Activity % Complete	2017				
							Apr	May	Jun	Jul	Aug
Box Culvert L1 & FRP-L - Bay 8 Structure											
CUL11328	Culvert L - bay 8 - construt top slab	12	10-Apr-17*	21-Apr-17	79	0%					
Box Culvert L1 & FRP-L - Bay 8 Others											
CUL11340	Culvert L - bay 8 - backfill above box section	25	03-Jun-17*	03-Jul-17	30	0%					
Section VI D - Area 8B & 10											
WDII Box 1 Construction											
WDII Box 1 Remaining Structure											
WD-C6075	Sec VID - Remaining of Box I: Construct sacrificial wall (2.3m)	11	19-Mar-17 A	10-Apr-17	0	60.71%					
WD-C6080	Sec VID - Remaining of Box I: Construct Wall 13(23m run)	16	07-Mar-17 A	15-Apr-17	8	46.67%					
WD-C6090	Sec VID - Remaining of Box I: Construct 2.5m wall 13	13	11-Apr-17	23-Apr-17	0	0%					
WD-C6120	Sec VID - Remaining of Box I: Blasting and final sink box to -10.0 mPD	2	24-Apr-17	25-Apr-17	0	0%					
WD-C6122	Sec VID - Remaining of Box I: Stching of 4 bored piles	12	26-Apr-17	07-May-17	0	0%					
WD-C6124	Sec VID - Remaining of Box I: Scaffolding and soffit work at 4 bored piles	10	08-May-17	17-May-17	0	0%					
WD-C6126	Sec VID - Remaining of Box I: Roof rebar and concreting flat roof	8	18-May-17	25-May-17	0	0%					
WD-C6128	Sec VID - Remaining of Box I: Construct remaining roof half joint	7	28-May-17	03-Jun-17	0	0%					
WD-C6130	Sec VID - Remaining of Box I: Waterproofing work of roof	12	04-Jun-17	15-Jun-17	0	0%					
WD-C6140	Sec VID - Backfilling at South of Box I : Backfilling bagged cement to -6.5mPD	5	26-Apr-17	30-Apr-17	6	0%					
WD-C6160	Sec VID - Backfilling at South of Box I : Remove all ELS shoring and cut off P7 to P58 at -6.5mPD	18	01-May-17	18-May-17	6	0%					
WD-C6200	Sec VID - Backfilling at South of Box I : Remove SIC coarse screen hood	11	19-May-17	29-May-17	6	0%					
WD-C6220	Sec VID - Backfilling at South of Box I : Install pipe cap for box beam	4	30-May-17	02-Jun-17	6	0%					
WD-C6222	Sec VID - Backfilling at South of Box I : Stching of H-pile	4	03-Jun-17	06-Jun-17	6	0%					
WD-C6223	Sec VID - Backfilling at South of Box I : Bagged lighthouse concrete btw cap & seawall	6	07-Jun-17	12-Jun-17	6	0%					
WD-C6240	Sec VID - Backfilling at South of Box I : Install box beam	4	13-Jun-17	16-Jun-17	6	0%					
WD-C6250	Sec VID - Backfilling at South of Box I : Place 400mm thk precast cover to SIC	4	17-Jun-17	20-Jun-17	6	0%					
WD-C6255	Sec VID - Backfilling at South of Box I : Bagged lightweight concrete btw precast cover and box beam	4	21-Jun-17	24-Jun-17	6	0%					
WD-C6275	Sec VID - Backfilling at North of Box I : Type C concrete block at Box I half joint	4	19-May-17	22-May-17	13	0%					
WD-C6295	Sec VID - Backfilling at North of Box I : Install ceramsite concrete blocks	8	23-May-17	30-May-17	13	0%					
WD-C6315	Sec VID - Backfilling at North of Box I : Type A concrete block at roof of Box 1/2	3	31-May-17	02-Jun-17	13	0%					
WD-C6320	Sec VI D - Public fill on the top of Box I	15	16-Jun-17	30-Jun-17	0	0%					
Section IV - Slip Road 3											
Roadwork & Utilities											
Section 2 (L2301 - L2103)											
SIV11940	Sec IV - Roadwork & Utilities at SR3 Section 2 Carriageway - Drainage Works	35	20-Apr-17*	02-Jun-17	0	0%					
SIV11960	Sec IV - Roadwork & Utilities at SR3 Section 2 Carriageway - Watermain	10	28-Jun-17	10-Jul-17	161	0%					
SIV12000	Sec IV - Roadwork & Utilities at SR3 Section 2 Carriageway - Gully pipe	21	03-Jun-17	27-Jun-17	161	0%					
Section VII - Remainder Works											
Promenade Seawall Parapet Construction											
SVII10400	Sec VII - construct block seawall mass concrete coping & backfill to pavement formation	50	15-Jun-17*	12-Aug-17	13	0%					
Section VIII - Landscape Softworks											
Soft Landscaping Works											



中國建築-利達聯營
CHINA STATE - LEADER JOINT VENTURE

CEDD Contract No. HK/2012/08
Wan Chai Development Phase II
Central - Wan Chai Bypass at Wan Chai West

Activity ID	Activity Name	Remaining Dur	Early Start	Early Finish	Total Float	Activity % Complete	2017				
							Apr	May	Jun	Jul	Aug
SVIII10040	Sec VIII - Trees Planting	118	31-Mar-17	24-Aug-17	0	0%					
Section X - Protection & Preservation of Trees											
Soft Landscaping Works											
SX10020	Sec X - Protection & Preservation of Trees	234	31-Jan-13 A	19-Nov-17	0	85.66%					

Activity ID	Activity Name	Ori Dur	Rem Dur	Scheduled/ Actual Start	Scheduled/ Actual Finish	Total Float	Calendar	2017																	
								April			May			June			July								
								26	02	09	16	23	30	07	14	21	28	04	11	18	25	02	09	16	
Three Months Rolling Programme 2017-04-20 (dd 20-Apr-17)																									
Programme Milestones (Revised up to EOTO No.21)																									
Contractual Completion Dates																									
KDC0170	Section 9B Works (2134 days) - CWB Structure (CH3400 Eastward) (2-Dec-15 Noon)	0	0		20-Apr-17*	-504	Calendar Day	◆ Section 9B Works (2134 days) - CWB Structure (CH3400 Eastward) (2-Dec-15 Noon)																	
KDC0180	Section 10 Works (2469 days) - CWB Structure (CH3400 Westward) (31-Oct-16)	0	0		20-Apr-17*	-170	Calendar Day	◆ Section 10 Works (2469 days) - CWB Structure (CH3400 Westward) (31-Oct-16)																	
KDC0190	Section 11 Works (2673 days) - Remainder of Works/ Works Completion Date (23-May-17)	0	0		23-May-17*	0	Calendar Day	◆ Section 11 Works (2673 days) - Remainder of Works/ Works Completion Date (23-May-17)																	
Soft Landscaping & Establishment Key Dates																									
KDC0200	Section 11A Works (2440 days) - Remaining Landscape Softworks (03-Oct-16 Noon)	0	0		20-Apr-17*	-198	Calendar Day	◆ Section 11A Works (2440 days) - Remaining Landscape Softworks (03-Oct-16 Noon)																	
KDC0220	Section 12 Works (2672 days) - Protection and Preservation of Existing Trees (22-May-17 Noon)	0	0		22-May-17*	0	Calendar Day	◆ Section 12 Works (2672 days) - Protection and Preservation of Existing Trees (22-May-17 Noon)																	
Section 8A of the Works - Reprovisioning of Wan Chai Ferry Pier in Area 8																									
Outstanding Works																									
S8A-OUT-1040	Relocation of fire hydrant near Ferry Pier	10	10	14-Jul-17	25-Jul-17	-58	HK Working Day																		
S8A-OUT-1060	Reinstatement works of the flooring inside the rooms under staircase ST-01 of the Ferry Pier	12	12	03-Jul-17	14-Jul-17	-58	HK Working Day																		
S8A-OUT-1070	Reinstatement works of the flooring under the temporary covered walkway	6	6	14-Jul-17	20-Jul-17	-54	HK Working Day																		
Section 8B of the Works - Temporary Covered Walkway & Works in Area 8																									
Temporary Covered Walkway																									
S8B-TCW-02300	Temp Covered Walkway - Construct the remaining Type 4 Covered Walkway at west wing	36	36	17-Jun-17	27-Jul-17	-60	HK Working Day																		
Section 9B of the Works - CWB Tunnel Structure (CH3400 - CH3796)																									
Tunnel Portion 1 (CH3500-CH3630)																									
CWB Structural Works																									
Outstanding Works																									
S9B-T1-OUT-1010	TB1 - Remedial works of the cross road ducts	25	0	12-Oct-16 A	15-Apr-17 A		Calendar Day	■ TB1 - Remedial works of the cross road ducts																	
S9B-T1-OUT-1030	TB1 - Remedial works against water leakage identified inside the OHVD cells	30	0	14-Mar-17 A	12-Apr-17 A		Calendar Day	■ TB1 - Remedial works against water leakage identified inside the OHVD cells																	
Tunnel Portion 2 (CH3425-CH3500)																									
CWB Structural Works																									
Outstanding Works																									
S9B-T2-OUT-1010	TB2 - Remedial works of the cross road ducts	25	7	12-Oct-16 A	26-Apr-17	-511	Calendar Day	■ TB2 - Remedial works of the cross road ducts, TB2 - Remedial works of the cross road ducts																	
S9B-T2-OUT-1020	TB2 - Remedial works against water leakage identified inside the OHVD cells	25	5	12-Oct-16 A	24-Apr-17	29	Calendar Day	■ TB2 - Remedial works against water leakage identified inside the OHVD cells																	
Tunnel Portion 3 & Tunnel Portion 4 (CH3630-CH3790)																									
CWB Structural Works																									
S9B-T34-7400	ELS (S1) Removal - Bay 1 to Bay 8	28	28	08-Jun-17	06-Jul-17	-503	Calendar Day	■ ELS (S1) Removal																	
Tunnel Portion 5 (CH3400-CH3425)																									
Bay 13 (Eastern End Bay)																									
S9B-T5-B13-1020	Base Slab - Rebar Fixing	10	0	11-Feb-17 A	30-Mar-17 A		Calendar Day	■ Base Slab - Rebar Fixing																	
S9B-T5-B13-1030	Base Slab - Concrete	1	0	31-Mar-17 A	31-Mar-17 A		Calendar Day	■ Base Slab - Concrete																	
S9B-T5-B13-1040	Base Slab - Curing	4	0	01-Apr-17 A	04-Apr-17 A		Calendar Day	■ Base Slab - Curing																	
S9B-T5-B13-1050	Wall (North) - Waterproofing & Working Platform	4	0	10-Apr-17 A	14-Apr-17 A		Calendar Day	■ Wall (North) - Waterproofing & Working Platform																	
S9B-T5-B13-1060	Wall (North) - Rebar Fixing	3	0	15-Apr-17 A	17-Apr-17 A		Calendar Day	■ Wall (North) - Rebar Fixing																	
S9B-T5-B13-1070	Wall (North) - Formwork	2	0	18-Apr-17 A	19-Apr-17 A		Calendar Day	■ Wall (North) - Formwork																	
S9B-T5-B13-1080	Wall (North) - Concrete	1	1	20-Apr-17	20-Apr-17	-546	Calendar Day	■ Wall (North) - Concrete, Wall (North) - Concrete																	
S9B-T5-B13-1090	Wall (North) - Curing & Formwork Dismantling	3	3	21-Apr-17	23-Apr-17	-546	Calendar Day	■ Wall (North) - Curing & Formwork Dismantling, Wall (North) - Curing & Formwork Dismantling																	
S9B-T5-B13-1100	Wall (South) - Waterproofing & Working Platform	4	0	10-Apr-17 A	13-Apr-17 A		Calendar Day	■ Wall (South) - Waterproofing & Working Platform																	
S9B-T5-B13-1110	Wall (South) - Rebar Fixing	3	0	14-Apr-17 A	16-Apr-17 A		Calendar Day	■ Wall (South) - Rebar Fixing																	
S9B-T5-B13-1120	Wall (South) - Formwork	2	0	17-Apr-17 A	18-Apr-17 A		Calendar Day	■ Wall (South) - Formwork																	
S9B-T5-B13-1130	Wall (South) - Concrete	1	0	19-Apr-17 A	19-Apr-17 A		Calendar Day	■ Wall (South) - Concrete																	
S9B-T5-B13-1140	Wall (South) - Curing & Formwork Dismantling	3	3	20-Apr-17	22-Apr-17	-549	Calendar Day	■ Wall (South) - Curing & Formwork Dismantling, Wall (South) - Curing & Formwork Dismantling																	
S9B-T5-B13-1150	Wall (Middle) - Rebar Fixing & Working Platform	4	0	12-Mar-17 A	12-Apr-17 A		Calendar Day	■ Wall (Middle) - Rebar Fixing & Working Platform																	
S9B-T5-B13-1160	Wall (Middle) - Formwork	2	0	13-Apr-17 A	14-Apr-17 A		Calendar Day	■ Wall (Middle) - Formwork																	
S9B-T5-B13-1170	Wall (Middle) - Concrete	1	0	15-Apr-17 A	15-Apr-17 A		Calendar Day	■ Wall (Middle) - Concrete																	
S9B-T5-B13-1180	Wall (Middle) - Curing & Formwork Dismantling	3	0	16-Apr-17 A	19-Apr-17 A		Calendar Day	■ Wall (Middle) - Curing & Formwork Dismantling																	
S9B-T5-B13-1185	Construct Roadside Barriers	6	2	12-Apr-17 A	21-Apr-17	-549	Calendar Day	■ Construct Roadside Barriers, Construct Roadside Barriers																	
S9B-T5-B13-1230	OHVD Base Slab (North) - Scaffolding Erection	10	10	22-Apr-17	01-May-17	-549	Calendar Day	■ OHVD Base Slab (North) - Scaffolding Erection, OHVD Base Slab (North) - Scaffolding Erection																	
S9B-T5-B13-1240	OHVD Base Slab (North) - Formwork & Rebar Fixing	7	7	29-Apr-17	05-May-17	-546	Calendar Day	■ OHVD Base Slab (North) - Formwork & Rebar Fixing, OHVD Base Slab (North) - Formwork & Rebar Fixing																	
S9B-T5-B13-1250	OHVD Base Slab (North) - Concrete & Curing	2	2	06-May-17	07-May-17	-546	Calendar Day	■ OHVD Base Slab (North) - Concrete & Curing, OHVD Base Slab (North) - Concrete & Curing																	

- ◆ Milestone
- ◆ Critical Milestones
- Current Works
- Critical Works
- Remaining Level of Effort

**CHUN WO - CRGL
JOINT VENTURE**

**CEDD CONTRACT NO. HK/2009/02
WD II - Central Wanchai Bypass at Wan Chai East (Contract 2)
3-MONTH ROLLING PROGRAMME (dd 20-Apr-17)**

Date	Revision	Checked	Approved
	Rev. Programme (08-Apr-...		

Activity ID	Activity Name	Ori Dur	Rem Dur	Scheduled/ Actual Start	Scheduled/ Actual Finish	Total Float	Calendar	2017																
								April					May				June				July			
								26	02	09	16	23	30	07	14	21	28	04	11	18	25	02	09	16
S10-T5-7110	Reinstate Temporary Access Opening in Bay 6	12	12	03-Jul-17	15-Jul-17	-52	Calendar Day	Reinstat																
S10-T5-8000	Tunnel Portion 5 Tunnel Structure - Cut down D-wall to +1.50mPD	10	10	16-Jul-17	26-Jul-17	-224	Calendar Day																	
Bay 11																								
S10-T5-B11-1050	Wall (North) - Waterproofing & Working Platform	4	0	18-Mar-17 A	21-Mar-17 A		Calendar Day	Wall (North) - Waterproofing & Working Platform																
S10-T5-B11-1060	Wall (North) - Rebar Fixing	3	0	22-Mar-17 A	24-Mar-17 A		Calendar Day	Wall (North) - Rebar Fixing																
S10-T5-B11-1070	Wall (North) - Formwork	2	0	25-Mar-17 A	26-Mar-17 A		Calendar Day	Wall (North) - Formwork																
S10-T5-B11-1080	Wall (North) - Concrete	1	0	27-Mar-17 A	27-Mar-17 A		Calendar Day	Wall (North) - Concrete																
S10-T5-B11-1090	Wall (North) - Curing & Formwork Dismantling	3	0	28-Mar-17 A	30-Mar-17 A		Calendar Day	Wall (North) - Curing & Formwork Dismantling																
S10-T5-B11-1100	Wall (South) - Waterproofing & Working Platform	3	0	28-Mar-17 A	30-Mar-17 A		Calendar Day	Wall (South) - Waterproofing & Working Platform																
S10-T5-B11-1110	Wall (South) - Rebar Fixing	3	0	31-Mar-17 A	02-Apr-17 A		Calendar Day	Wall (South) - Rebar Fixing																
S10-T5-B11-1120	Wall (South) - Formwork	2	0	03-Apr-17 A	04-Apr-17 A		Calendar Day	Wall (South) - Formwork																
S10-T5-B11-1130	Wall (South) - Concrete	1	0	05-Apr-17 A	05-Apr-17 A		Calendar Day	Wall (South) - Concrete																
S10-T5-B11-1140	Wall (South) - Curing & Formwork Dismantling	3	0	06-Apr-17 A	08-Apr-17 A		Calendar Day	Wall (South) - Curing & Formwork Dismantling																
S10-T5-B11-1180	Wall (Middle) - Curing & Formwork Dismantling	3	0	20-Mar-17 A	22-Mar-17 A		Calendar Day	Wall (Middle) - Curing & Formwork Dismantling																
S10-T5-B11-1185	Construct Roadside Barriers	5	0	21-Mar-17 A	10-Apr-17 A		Calendar Day	Construct Roadside Barriers																
S10-T5-B11-1230	OHVD Base Slab (North) - Scaffolding Erection	10	10	20-Apr-17	29-Apr-17	-543	Calendar Day	OHVD Base Slab (North) - Scaffolding Erection, OHVD Base Slab (North) - Scaffolding Erection																
S10-T5-B11-1240	OHVD Base Slab (North) - Formwork & Rebar Fixing	7	7	25-Apr-17	02-May-17	-543	Calendar Day	OHVD Base Slab (North) - Formwork & Rebar Fixing, OHVD Base Slab (North) - Formwork & Rebar Fixing																
S10-T5-B11-1250	OHVD Base Slab (North) - Concrete & Curing	2	2	02-May-17	04-May-17	-543	Calendar Day	OHVD Base Slab (North) - Concrete & Curing, OHVD Base Slab (North) - Concrete & Curing																
S10-T5-B11-1260	OHVD Base Slab (North) - Hanger Wall & Scaffolding to Roof	3	3	04-May-17	07-May-17	-541	Calendar Day	OHVD Base Slab (North) - Hanger Wall & Scaffolding to Roof, OHVD Base Slab (North) - Hanger Wall																
S10-T5-B11-1270	OHVD Base Slab (South) - Scaffolding Erection	10	10	20-Apr-17	29-Apr-17	-542	Calendar Day	OHVD Base Slab (South) - Scaffolding Erection, OHVD Base Slab (South) - Scaffolding Erection																
S10-T5-B11-1280	OHVD Base Slab (South) - Formwork & Rebar Fixing	7	7	25-Apr-17	02-May-17	-543	Calendar Day	OHVD Base Slab (South) - Formwork & Rebar Fixing, OHVD Base Slab (South) - Formwork & Rebar Fixing																
S10-T5-B11-1290	OHVD Base Slab (South) - Concrete & Curing	2	2	02-May-17	04-May-17	-543	Calendar Day	OHVD Base Slab (South) - Concrete & Curing, OHVD Base Slab (South) - Concrete & Curing																
S10-T5-B11-1300	OHVD Base Slab (South) - Hanger Wall & Scaffolding to Roof	3	3	04-May-17	07-May-17	-541	Calendar Day	OHVD Base Slab (South) - Hanger Wall & Scaffolding to Roof, OHVD Base Slab (South) - Hanger Wall																
S10-T5-B11-1350	Roof - Waterproofing	6	6	04-May-17	10-May-17	-543	Calendar Day	Roof - Waterproofing, Roof - Waterproofing																
S10-T5-B11-1360	Roof - Rebar Fixing & Formwork	14	14	09-May-17	23-May-17	-543	Calendar Day	Roof - Rebar Fixing & Formwork, Roof - Rebar Fixing & Formwork																
S10-T5-B11-1370	Roof - Concrete	1	1	23-May-17	24-May-17	-72	Calendar Day	Roof - Concrete, Roof - Concrete																
S10-T5-B11-1380	Roof - Curing	12	12	24-May-17	06-Jun-17	-72	Calendar Day	Roof - Curing, Roof - Curing																
S10-T5-B11-1390	Roof - Scaffolding Dismantling	5	5	06-Jun-17	11-Jun-17	-39	Calendar Day	Roof - Scaffolding Dismantling, Roof - Scaffolding Dis																
Bay 10																								
S10-T5-B10-1060	Wall (North) - Rebar Fixing	3	0	19-Mar-17 A	21-Mar-17 A		Calendar Day	Wall (North) - Rebar Fixing																
S10-T5-B10-1070	Wall (North) - Formwork	2	0	22-Mar-17 A	23-Mar-17 A		Calendar Day	Wall (North) - Formwork																
S10-T5-B10-1080	Wall (North) - Concrete	1	0	24-Mar-17 A	24-Mar-17 A		Calendar Day	Wall (North) - Concrete																
S10-T5-B10-1090	Wall (North) - Curing & Formwork Dismantling	3	0	25-Mar-17 A	27-Mar-17 A		Calendar Day	Wall (North) - Curing & Formwork Dismantling																
S10-T5-B10-1100	Wall (South) - Waterproofing & Working Platform	3	0	25-Mar-17 A	27-Mar-17 A		Calendar Day	Wall (South) - Waterproofing & Working Platform																
S10-T5-B10-1110	Wall (South) - Rebar Fixing	3	0	28-Mar-17 A	30-Mar-17 A		Calendar Day	Wall (South) - Rebar Fixing																
S10-T5-B10-1120	Wall (South) - Formwork	2	0	31-Mar-17 A	01-Apr-17 A		Calendar Day	Wall (South) - Formwork																
S10-T5-B10-1130	Wall (South) - Concrete	1	0	02-Apr-17 A	02-Apr-17 A		Calendar Day	Wall (South) - Concrete																
S10-T5-B10-1140	Wall (South) - Curing & Formwork Dismantling	3	0	03-Apr-17 A	05-Apr-17 A		Calendar Day	Wall (South) - Curing & Formwork Dismantling																
S10-T5-B10-1185	Construct Roadside Barriers	6	0	20-Mar-17 A	06-Apr-17 A		Calendar Day	Construct Roadside Barriers																
S10-T5-B10-1230	OHVD Base Slab (North) - Scaffolding Erection	10	0	08-Apr-17 A	17-Apr-17 A		Calendar Day	OHVD Base Slab (North) - Scaffolding Erection																
S10-T5-B10-1240	OHVD Base Slab (North) - Formwork & Rebar Fixing	7	7	17-Apr-17 A	26-Apr-17	-73	Calendar Day	OHVD Base Slab (North) - Formwork & Rebar Fixing, OHVD Base Slab (North) - Formwork & Rebar Fixing																
S10-T5-B10-1250	OHVD Base Slab (North) - Concrete & Curing	2	2	03-May-17	04-May-17	-72	Calendar Day	OHVD Base Slab (North) - Concrete & Curing, OHVD Base Slab (North) - Concrete & Curing																
S10-T5-B10-1260	OHVD Base Slab (North) - Hanger Wall & Scaffolding to Roof	3	3	05-May-17	07-May-17	-70	Calendar Day	OHVD Base Slab (North) - Hanger Wall & Scaffolding to Roof, OHVD Base Slab (North) - Hanger Wall																
S10-T5-B10-1270	OHVD Base Slab (South) - Scaffolding Erection	10	0	10-Apr-17 A	19-Apr-17 A		Calendar Day	OHVD Base Slab (South) - Scaffolding Erection																
S10-T5-B10-1280	OHVD Base Slab (South) - Formwork & Rebar Fixing	7	8	20-Apr-17 A	02-May-17	-73	Calendar Day	OHVD Base Slab (South) - Formwork & Rebar Fixing, OHVD Base Slab (South) - Formwork & Rebar Fixing																
S10-T5-B10-1290	OHVD Base Slab (South) - Concrete & Curing	2	2	03-May-17	04-May-17	-73	Calendar Day	OHVD Base Slab (South) - Concrete & Curing, OHVD Base Slab (South) - Concrete & Curing																
S10-T5-B10-1300	OHVD Base Slab (South) - Hanger Wall & Scaffolding to Roof	3	3	05-May-17	07-May-17	-70	Calendar Day	OHVD Base Slab (South) - Hanger Wall & Scaffolding to Roof, OHVD Base Slab (South) - Hanger Wall																
S10-T5-B10-1350	Roof - Waterproofing	7	7	05-May-17	12-May-17	-73	Calendar Day	Roof - Waterproofing, Roof - Waterproofing																
S10-T5-B10-1360	Roof - Rebar Fixing & Formwork	14	14	10-May-17	24-May-17	-73	Calendar Day	Roof - Rebar Fixing & Formwork, Roof - Rebar Fixing & Formwork																
S10-T5-B10-1370	Roof - Concrete	1	1	24-May-17	25-May-17	-73	Calendar Day	Roof - Concrete, Roof - Concrete																
S10-T5-B10-1380	Roof - Curing	12	12	25-May-17	07-Jun-17	-73	Calendar Day	Roof - Curing, Roof - Curing																
S10-T5-B10-1390	Roof - Scaffolding Dismantling	7	7	07-Jun-17	14-Jun-17	-41	Calendar Day	Roof - Scaffolding Dismantling, Roof - Scaffolding D																
Bay 9																								
S10-T5-B9-1090	Wall (North) - Curing & Formwork Dismantling	3	0	21-Mar-17 A	23-Mar-17 A		Calendar Day	Wall (North) - Curing & Formwork Dismantling																
S10-T5-B9-1100	Wall (South) - Waterproofing & Working Platform	4	0	22-Mar-17 A	25-Mar-17 A		Calendar Day	Wall (South) - Waterproofing & Working Platform																
S10-T5-B9-1110	Wall (South) - Rebar Fixing	3	0	26-Mar-17 A	28-Mar-17 A		Calendar Day	Wall (South) - Rebar Fixing																

- ◆ Milestone
- ◆ Critical Milestones
- Current Works
- Critical Works
- Remaining Level of Effort

CHUN WO - CRGL
JOINT VENTURE

CEDD CONTRACT NO. HK/2009/02

WD II - Central Wanchai Bypass at Wan Chai East (Contract 2)

3-MONTH ROLLING PROGRAMME (dd 20-Apr-17)

Date	Revision	Checked	Approved
	Rev. Programme (08-Apr-...		

Activity ID	Activity Name	Ori Dur	Rem Dur	Scheduled/ Actual Start	Scheduled/ Actual Finish	Total Float	Calendar	2017																			
								April					May					June					July				
								26	02	09	16	23	30	07	14	21	28	04	11	18	25	02	09	16			
S10-T5-B9-1120	Wall (South) - Formwork	2	0	29-Mar-17 A	30-Mar-17 A		Calendar Day																				
S10-T5-B9-1130	Wall (South) - Concrete	1	0	31-Mar-17 A	31-Mar-17 A		Calendar Day																				
S10-T5-B9-1140	Wall (South) - Curing & Formwork Dismantling	3	0	01-Apr-17 A	03-Apr-17 A		Calendar Day																				
S10-T5-B9-1185	Construct Roadside Barriers	7	0	20-Mar-17 A	06-Apr-17 A		Calendar Day																				
S10-T5-B9-1230	OHVD Base Slab (North) - Scaffolding Erection	10	0	07-Apr-17 A	17-Apr-17 A		Calendar Day																				
S10-T5-B9-1240	OHVD Base Slab (North) - Formwork & Rebar Fixing	7	7	18-Apr-17 A	26-Apr-17	-26	Calendar Day																				
S10-T5-B9-1250	OHVD Base Slab (North) - Concrete & Curing	2	2	28-Apr-17	29-Apr-17	-26	Calendar Day																				
S10-T5-B9-1260	OHVD Base Slab (North) - Hanger Wall & Scaffolding to Roof	3	3	30-Apr-17	02-May-17	-26	Calendar Day																				
S10-T5-B9-1270	OHVD Base Slab (South) - Scaffolding Erection	10	0	08-Apr-17 A	17-Apr-17 A		Calendar Day																				
S10-T5-B9-1280	OHVD Base Slab (South) - Formwork & Rebar Fixing	7	7	18-Apr-17 A	27-Apr-17	-26	Calendar Day																				
S10-T5-B9-1290	OHVD Base Slab (South) - Concrete & Curing	2	2	28-Apr-17	29-Apr-17	-26	Calendar Day																				
S10-T5-B9-1300	OHVD Base Slab (South) - Hanger Wall & Scaffolding to Roof	3	3	30-Apr-17	02-May-17	-26	Calendar Day																				
S10-T5-B9-1350	Roof - Waterproofing	7	7	30-Apr-17	06-May-17	-25	Calendar Day																				
S10-T5-B9-1360	Roof - Rebar Fixing & Formwork	11	11	08-May-17	18-May-17	-31	Calendar Day																				
S10-T5-B9-1370	Roof - Concrete	1	1	19-May-17	19-May-17	-31	Calendar Day																				
S10-T5-B9-1380	Roof - Curing	12	12	20-May-17	01-Jun-17	-31	Calendar Day																				
S10-T5-B9-1390	Roof - Scaffolding Dismantling	7	7	01-Jun-17	08-Jun-17	-31	Calendar Day																				
Bay 8A - Roof only																											
S10-T5-B8A-1350	Roof - Waterproofing	7	7	29-Apr-17	05-May-17	-36	Calendar Day																				
S10-T5-B8A-1360	Roof - Rebar Fixing & Formwork	14	14	06-May-17	19-May-17	-36	Calendar Day																				
S10-T5-B8A-1370	Roof - Concrete	1	1	20-May-17	20-May-17	-36	Calendar Day																				
S10-T5-B8A-1380	Roof - Curing	12	12	21-May-17	02-Jun-17	-36	Calendar Day																				
S10-T5-B8A-1390	Roof - Scaffolding Dismantling	7	7	02-Jun-17	09-Jun-17	-36	Calendar Day																				
Bay 8																											
S10-T5-B8-1100	Wall (South) - Waterproofing & Working Platform	4	0	20-Mar-17 A	23-Mar-17 A		Calendar Day																				
S10-T5-B8-1110	Wall (South) - Rebar Fixing	3	0	24-Mar-17 A	26-Mar-17 A		Calendar Day																				
S10-T5-B8-1120	Wall (South) - Formwork	2	0	27-Mar-17 A	28-Mar-17 A		Calendar Day																				
S10-T5-B8-1130	Wall (South) - Concrete	1	0	29-Mar-17 A	29-Mar-17 A		Calendar Day																				
S10-T5-B8-1140	Wall (South) - Curing & Formwork Dismantling	3	0	30-Mar-17 A	01-Apr-17 A		Calendar Day																				
S10-T5-B8-1185	Construct Roadside Barriers	7	0	20-Mar-17 A	05-Apr-17 A		Calendar Day																				
S10-T5-B8-1230	OHVD Base Slab (North) - Scaffolding Erection	10	0	03-Apr-17 A	09-Apr-17 A		Calendar Day																				
S10-T5-B8-1240	OHVD Base Slab (North) - Formwork & Rebar Fixing	7	0	10-Apr-17 A	16-Apr-17 A		Calendar Day																				
S10-T5-B8-1250	OHVD Base Slab (North) - Concrete & Curing	2	0	17-Apr-17 A	18-Apr-17 A		Calendar Day																				
S10-T5-B8-1260	OHVD Base Slab (North) - Hanger Wall & Scaffolding to Roof	3	2	19-Apr-17 A	21-Apr-17	-22	Calendar Day																				
S10-T5-B8-1270	OHVD Base Slab (South) - Scaffolding Erection	10	0	04-Apr-17 A	16-Apr-17 A		Calendar Day																				
S10-T5-B8-1280	OHVD Base Slab (South) - Formwork & Rebar Fixing	7	4	17-Apr-17 A	23-Apr-17	-36	Calendar Day																				
S10-T5-B8-1290	OHVD Base Slab (South) - Concrete & Curing	2	2	24-Apr-17	25-Apr-17	-36	Calendar Day																				
S10-T5-B8-1300	OHVD Base Slab (South) - Hanger Wall & Scaffolding to Roof	3	3	26-Apr-17	28-Apr-17	-27	Calendar Day																				
S10-T5-B8-1350	Roof - Waterproofing	7	7	20-Apr-17 A	02-May-17	-36	Calendar Day																				
S10-T5-B8-1360	Roof - Rebar Fixing & Formwork	14	14	01-May-17	14-May-17	-31	Calendar Day																				
S10-T5-B8-1370	Roof - Concrete	1	1	15-May-17	15-May-17	-31	Calendar Day																				
S10-T5-B8-1380	Roof - Curing	12	12	16-May-17	28-May-17	-31	Calendar Day																				
S10-T5-B8-1390	Roof - Scaffolding Dismantling	7	7	28-May-17	04-Jun-17	-31	Calendar Day																				
Bay 7																											
S10-T5-B7-1100	Wall (South) - Waterproofing & Working Platform	4	0	18-Mar-17 A	21-Mar-17 A		Calendar Day																				
S10-T5-B7-1110	Wall (South) - Rebar Fixing	3	0	22-Mar-17 A	24-Mar-17 A		Calendar Day																				
S10-T5-B7-1120	Wall (South) - Formwork	2	0	26-Mar-17 A	26-Mar-17 A		Calendar Day																				
S10-T5-B7-1130	Wall (South) - Concrete	1	0	27-Mar-17 A	27-Mar-17 A		Calendar Day																				
S10-T5-B7-1140	Wall (South) - Curing & Formwork Dismantling	3	0	28-Mar-17 A	30-Mar-17 A		Calendar Day																				
S10-T5-B7-1185	Construct Roadside Barriers	7	0	03-Mar-17 A	23-Mar-17 A		Calendar Day																				
S10-T5-B7-1230	OHVD Base Slab (North) - Scaffolding Erection	10	0	27-Mar-17 A	04-Apr-17 A		Calendar Day																				
S10-T5-B7-1240	OHVD Base Slab (North) - Formwork & Rebar Fixing	7	0	05-Apr-17 A	11-Apr-17 A		Calendar Day																				
S10-T5-B7-1250	OHVD Base Slab (North) - Concrete & Curing	2	0	12-Apr-17 A	13-Apr-17 A		Calendar Day																				
S10-T5-B7-1260	OHVD Base Slab (North) - Hanger Wall & Scaffolding to Roof	3	0	14-Apr-17 A	16-Apr-17 A		Calendar Day																				
S10-T5-B7-1310	OHVD Base Slab (South) - Scaffolding Erection	10	0	28-Mar-17 A	05-Apr-17 A		Calendar Day																				
S10-T5-B7-1320	OHVD Base Slab (South) - Formwork & Rebar Fixing	7	0	06-Apr-17 A	18-Apr-17 A		Calendar Day																				

- ◆ Milestone
- ◆ Critical Milestones
- █ Current Works
- █ Critical Works
- █ Remaining Level of Effort

**CHUN WO - CRGL
JOINT VENTURE**

**CEDD CONTRACT NO. HK/2009/02
WD II - Central Wanchai Bypass at Wan Chai East (Contract 2)
3-MONTH ROLLING PROGRAMME (dd 20-Apr-17)**

Date	Revision	Checked	Approved
	Rev. Programme (08-Apr-...		

Activity ID	Activity Name	Ori Dur	Rem Dur	Scheduled/ Actual Start	Scheduled/ Actual Finish	Total Float	Calendar	2017																
								April				May				June				July				
								26	02	09	16	23	30	07	14	21	28	04	11	18	25	02	09	16
S10-T5-B7-1330	OHVD Base Slab (South) - Concrete & Curing	2	0	19-Apr-17 A	20-Apr-17 A		Calendar Day																	
S10-T5-B7-1340	OHVD Base Slab (South) - Hanger Wall & Scaffolding to Roof	3	3	20-Apr-17	22-Apr-17	-31	Calendar Day																	
S10-T5-B7-1350	Roof - Waterproofing	7	6	18-Apr-17 A	26-Apr-17	-34	Calendar Day																	
S10-T5-B7-1360	Roof - Rebar Fixing & Formwork	12	12	25-Apr-17	07-May-17	-34	Calendar Day																	
S10-T5-B7-1370	Roof - Concrete	1	1	07-May-17	08-May-17	-34	Calendar Day																	
S10-T5-B7-1380	Roof - Curing	12	12	08-May-17	21-May-17	-34	Calendar Day																	
S10-T5-B7-1390	Roof - Scaffolding Dismantling	7	7	21-May-17	28-May-17	-34	Calendar Day																	
Bay 6A - Roof only																								
S10-T5-B6A-1410	Roof - Waterproofing	7	3	16-Apr-17 A	22-Apr-17	-10	Calendar Day																	
S10-T5-B6A-1411	Roof - Rebar Fixing & Formwork	13	13	20-Apr-17	02-May-17	-10	Calendar Day																	
S10-T5-B6A-1412	Roof - Concrete	1	1	03-May-17	03-May-17	-10	Calendar Day																	
S10-T5-B6A-1413	Roof - Curing	12	12	04-May-17	16-May-17	-10	Calendar Day																	
S10-T5-B6A-1414	Roof - Scaffolding Dismantling	7	7	16-May-17	23-May-17	-1	Calendar Day																	
Bay 6																								
S10-T5-B6-1120	Wall (South) - Formwork	2	0	21-Mar-17 A	22-Mar-17 A		Calendar Day																	
S10-T5-B6-1130	Wall (South) - Concrete	1	0	23-Mar-17 A	23-Mar-17 A		Calendar Day																	
S10-T5-B6-1140	Wall (South) - Curing & Formwork Dismantling	3	0	24-Mar-17 A	26-Mar-17 A		Calendar Day																	
S10-T5-B6-1225	Construct Roadside Barriers	7	0	12-Feb-17 A	21-Mar-17 A		Calendar Day																	
S10-T5-B6-1230	OHVD Base Slab (North) - Scaffolding Erection	10	0	15-Mar-17 A	24-Mar-17 A		Calendar Day																	
S10-T5-B6-1240	OHVD Base Slab (North) - Formwork & Rebar Fixing	7	0	25-Mar-17 A	11-Apr-17 A		Calendar Day																	
S10-T5-B6-1250	OHVD Base Slab (North) - Concrete & Curing	2	0	12-Apr-17 A	13-Apr-17 A		Calendar Day																	
S10-T5-B6-1260	OHVD Base Slab (North) - Hanger Wall & Scaffolding to Roof	3	0	14-Apr-17 A	16-Apr-17 A		Calendar Day																	
S10-T5-B6-1315	OHVD Base Slab (South) - Scaffolding Erection	10	0	29-Mar-17 A	06-Apr-17 A		Calendar Day																	
S10-T5-B6-1320	OHVD Base Slab (South) - Formwork & Rebar Fixing	7	0	07-Apr-17 A	18-Apr-17 A		Calendar Day																	
S10-T5-B6-1325	OHVD Base Slab (South) - Concrete & Curing	2	0	19-Apr-17 A	20-Apr-17	-28	Calendar Day																	
S10-T5-B6-1330	OHVD Base Slab (South) - Hanger Wall & Scaffolding to Roof	3	3	20-Apr-17	22-Apr-17	-29	Calendar Day																	
S10-T5-B6-1350	Roof - Waterproofing	7	3	16-Apr-17 A	22-Apr-17	-26	Calendar Day																	
S10-T5-B6-1360	Roof - Rebar Fixing & Formwork	11	9	18-Apr-17 A	01-May-17	-29	Calendar Day																	
S10-T5-B6-1370	Roof - Concrete	1	1	02-May-17	02-May-17	-29	Calendar Day																	
S10-T5-B6-1380	Roof - Curing	12	12	03-May-17	15-May-17	-9	Calendar Day																	
S10-T5-B6-1390	Roof - Scaffolding Dismantling	7	7	15-May-17	22-May-17	-1	Calendar Day																	
Bay 5 (3 Cells)																								
S10-T5-B5-1225	Construct Roadside Barriers	7	0	13-Feb-17 A	05-Apr-17 A		Calendar Day																	
S10-T5-B5-1230	OHVD Base Slab (North & Middle) - Scaffolding Erection	14	0	15-Mar-17 A	28-Mar-17 A		Calendar Day																	
S10-T5-B5-1240	OHVD Base Slab (North & Middle) - Formwork & Rebar Fixing	13	0	29-Mar-17 A	09-Apr-17 A		Calendar Day																	
S10-T5-B5-1250	OHVD Base Slab (North & Middle) - Concrete & Curing	2	0	10-Apr-17 A	11-Apr-17 A		Calendar Day																	
S10-T5-B5-1260	OHVD Base Slab (North & Middle) - Hanger Wall & Scaffolding to Roof	3	0	12-Apr-17 A	14-Apr-17 A		Calendar Day																	
S10-T5-B5-1310	OHVD Base Slab (South) - Scaffolding Erection	10	0	28-Mar-17 A	05-Apr-17 A		Calendar Day																	
S10-T5-B5-1320	OHVD Base Slab (South) - Formwork & Rebar Fixing	7	0	06-Apr-17 A	16-Apr-17 A		Calendar Day																	
S10-T5-B5-1330	OHVD Base Slab (South) - Concrete & Curing	2	0	17-Apr-17 A	18-Apr-17 A		Calendar Day																	
S10-T5-B5-1340	OHVD Base Slab (South) - Hanger Wall & Scaffolding to Roof	3	2	19-Apr-17 A	21-Apr-17	-12	Calendar Day																	
S10-T5-B5-1350	Roof - Waterproofing	7	2	19-Apr-17 A	21-Apr-17	-12	Calendar Day																	
S10-T5-B5-1360	Roof - Rebar Fixing & Formwork	14	14	21-Apr-17	05-May-17	-12	Calendar Day																	
S10-T5-B5-1370	Roof - Concrete	1	1	05-May-17	05-May-17	-12	Calendar Day																	
S10-T5-B5-1380	Roof - Curing	12	12	06-May-17	18-May-17	-12	Calendar Day																	
S10-T5-B5-1390	Roof - Scaffolding Dismantling	7	7	18-May-17	25-May-17	-4	Calendar Day																	
Bay 4 (3 Cells)																								
S10-T5-B4-1100	Wall (South) - Waterproofing & Working Platform	4	0	19-Mar-17 A	22-Mar-17 A		Calendar Day																	
S10-T5-B4-1110	Wall (South) - Rebar Fixing	3	0	23-Mar-17 A	25-Mar-17 A		Calendar Day																	
S10-T5-B4-1120	Wall (South) - Formwork	2	0	26-Mar-17 A	27-Mar-17 A		Calendar Day																	
S10-T5-B4-1130	Wall (South) - Concrete	1	0	28-Mar-17 A	28-Mar-17 A		Calendar Day																	
S10-T5-B4-1140	Wall (South) - Curing & Formwork Dismantling	3	0	29-Mar-17 A	31-Mar-17 A		Calendar Day																	
S10-T5-B4-1230	OHVD Base Slab (North and Middle) - Scaffolding Erection	14	0	11-Mar-17 A	25-Mar-17 A		Calendar Day																	
S10-T5-B4-1240	OHVD Base Slab (North and Middle) - Formwork & Rebar Fixing	13	0	26-Mar-17 A	15-Apr-17 A		Calendar Day																	
S10-T5-B4-1250	OHVD Base Slab (North and Middle) - Concrete & Curing	2	0	16-Apr-17 A	17-Apr-17 A		Calendar Day																	
S10-T5-B4-1260	OHVD Base Slab (North and Middle) - Hanger Wall & Scaffolding to Roof	3	0	18-Apr-17 A	20-Apr-17 A		Calendar Day																	

- ◆ Milestone
- ◆ Critical Milestones
- █ Current Works
- █ Critical Works
- █ Remaining Level of Effort

**CHUN WO - CRGL
JOINT VENTURE**

**CEDD CONTRACT NO. HK/2009/02
WD II - Central Wanchai Bypass at Wan Chai East (Contract 2)
3-MONTH ROLLING PROGRAMME (dd 20-Apr-17)**

Date	Revision	Checked	Approved
	Rev. Programme (08-Apr-...		

Activity ID	Activity Name	Ori Dur	Rem Dur	Scheduled/ Actual Start	Scheduled/ Actual Finish	Total Float	Calendar	2017																							
								April					May					June					July								
								26	02	09	16	23	30	07	14	21	28	04	11	18	25	02	09	16							
S10-T5-B4-1310	OHVD Base Slab (South) - Scaffolding Erection	8	0	18-Mar-17 A	25-Mar-17 A		Calendar Day																								
S10-T5-B4-1320	OHVD Base Slab (South) - Formwork & Rebar Fixing	7	0	26-Mar-17 A	18-Apr-17 A		Calendar Day																								
S10-T5-B4-1330	OHVD Base Slab (South) - Concrete & Curing	2	0	19-Apr-17 A	20-Apr-17 A		Calendar Day																								
S10-T5-B4-1340	OHVD Base Slab (South) - Hanger Wall & Scaffolding to Roof	3	5	20-Apr-17 A	24-Apr-17	-466	Calendar Day																								
S10-T5-B4-1350	Roof - Waterproofing	6	6	25-Apr-17	30-Apr-17	-466	Calendar Day																								
S10-T5-B4-1360	Roof - Rebar Fixing & Formwork	11	11	01-May-17	11-May-17	-466	Calendar Day																								
S10-T5-B4-1370	Roof - Concrete	1	1	12-May-17	12-May-17	-466	Calendar Day																								
S10-T5-B4-1380	Roof - Curing	12	12	13-May-17	25-May-17	-466	Calendar Day																								
S10-T5-B4-1390	Roof - Scaffolding Dismantling	3	3	25-May-17	28-May-17	-221	Calendar Day																								
S10-T5-B4-1400	Construct Roadside Barriers	5	13	10-Feb-17 A	10-Jun-17	-221	Calendar Day																								
Bay 3 (3 Cells)																															
S10-T5-B3-1070	Wall (North) - Formwork	3	0	20-Mar-17 A	21-Mar-17 A		Calendar Day																								
S10-T5-B3-1080	Wall (North) - Concrete	1	0	22-Mar-17 A	22-Mar-17 A		Calendar Day																								
S10-T5-B3-1090	Wall (North) - Curing & Formwork Dismantling	3	0	23-Mar-17 A	25-Mar-17 A		Calendar Day																								
S10-T5-B3-1100	Wall (South) - Waterproofing & Working Platform	4	0	20-Mar-17 A	23-Mar-17 A		Calendar Day																								
S10-T5-B3-1110	Wall (South) - Rebar Fixing	3	0	24-Mar-17 A	26-Mar-17 A		Calendar Day																								
S10-T5-B3-1120	Wall (South) - Formwork	3	0	27-Mar-17 A	29-Mar-17 A		Calendar Day																								
S10-T5-B3-1130	Wall (South) - Concrete	1	0	30-Mar-17 A	30-Mar-17 A		Calendar Day																								
S10-T5-B3-1140	Wall (South) - Curing & Formwork Dismantling	3	0	31-Mar-17 A	02-Apr-17 A		Calendar Day																								
S10-T5-B3-1230	OHVD Base Slab (North & Middle) - Scaffolding Erection	14	0	30-Mar-17 A	11-Apr-17 A		Calendar Day																								
S10-T5-B3-1240	OHVD Base Slab (North & Middle) - Formwork & Rebar Fixing	13	2	12-Apr-17 A	23-Apr-17	-469	Calendar Day																								
S10-T5-B3-1250	OHVD Base Slab (North & Middle) - Concrete & Curing	2	2	24-Apr-17	25-Apr-17	-469	Calendar Day																								
S10-T5-B3-1260	OHVD Base Slab (North & Middle) - Hanger Wall & Scaffolding to Roof	3	3	26-Apr-17	28-Apr-17	-465	Calendar Day																								
S10-T5-B3-1310	OHVD Base Slab (South) - Scaffolding Erection	8	0	05-Apr-17 A	13-Apr-17 A		Calendar Day																								
S10-T5-B3-1320	OHVD Base Slab (South) - Formwork & Rebar Fixing	7	2	14-Apr-17 A	21-Apr-17	-467	Calendar Day																								
S10-T5-B3-1330	OHVD Base Slab (South) - Concrete & Curing	2	2	24-Apr-17	25-Apr-17	-469	Calendar Day																								
S10-T5-B3-1340	OHVD Base Slab (South) - Hanger Wall & Scaffolding to Roof	3	3	26-Apr-17	28-Apr-17	-465	Calendar Day																								
S10-T5-B3-1350	Roof - Waterproofing	7	7	26-Apr-17	02-May-17	-469	Calendar Day																								
S10-T5-B3-1360	Roof - Rebar Fixing & Formwork	13	13	03-May-17	15-May-17	-469	Calendar Day																								
S10-T5-B3-1370	Roof - Concrete	1	1	16-May-17	16-May-17	-469	Calendar Day																								
S10-T5-B3-1380	Roof - Curing	12	12	17-May-17	29-May-17	-469	Calendar Day																								
S10-T5-B3-1390	Roof - Scaffolding Dismantling	3	3	29-May-17	31-May-17	-212	Calendar Day																								
S10-T5-B3-1400	Construct Roadside Barriers	5	0	21-Feb-17 A	01-Apr-17 A		Calendar Day																								
Bay 2 (3 Cells)																															
S10-T5-B2-1070	Wall (North) - Rebar Fixing	3	0	20-Mar-17 A	22-Mar-17 A		Calendar Day																								
S10-T5-B2-1080	Wall (North) - Formwork	3	0	23-Mar-17 A	24-Mar-17 A		Calendar Day																								
S10-T5-B2-1090	Wall (North) - Concrete	1	0	25-Mar-17 A	25-Mar-17 A		Calendar Day																								
S10-T5-B2-1100	Wall (North) - Curing & Formwork Dismantling	3	0	26-Mar-17 A	28-Mar-17 A		Calendar Day																								
S10-T5-B2-1110	Wall (South) - Waterproofing & Working Platform	4	0	24-Mar-17 A	27-Mar-17 A		Calendar Day																								
S10-T5-B2-1120	Wall (South) - Rebar Fixing	3	0	28-Mar-17 A	30-Mar-17 A		Calendar Day																								
S10-T5-B2-1130	Wall (South) - Formwork	3	0	31-Mar-17 A	02-Apr-17 A		Calendar Day																								
S10-T5-B2-1140	Wall (South) - Concrete	1	0	03-Apr-17 A	03-Apr-17 A		Calendar Day																								
S10-T5-B2-1150	Wall (South) - Curing & Formwork Dismantling	3	0	04-Apr-17 A	06-Apr-17 A		Calendar Day																								
S10-T5-B2-1240	OHVD Base Slab (North & Middle) - Scaffolding Erection	14	3	30-Mar-17 A	24-Apr-17	-481	Calendar Day																								
S10-T5-B2-1250	OHVD Base Slab (North & Middle) - Formwork & Rebar Fixing	13	13	25-Apr-17	07-May-17	-481	Calendar Day																								
S10-T5-B2-1260	OHVD Base Slab (North & Middle) - Concrete & Curing	2	2	08-May-17	09-May-17	-481	Calendar Day																								
S10-T5-B2-1270	OHVD Base Slab (North & Middle) - Hanger Wall & Scaffolding to Roof	3	3	10-May-17	12-May-17	-477	Calendar Day																								
S10-T5-B2-1280	OHVD Base Slab (South) - Scaffolding Erection	8	3	06-Apr-17 A	22-Apr-17	-473	Calendar Day																								
S10-T5-B2-1290	OHVD Base Slab (South) - Formwork & Rebar Fixing	7	7	23-Apr-17	29-Apr-17	-473	Calendar Day																								
S10-T5-B2-1300	OHVD Base Slab (South) - Concrete & Curing	2	2	08-May-17	09-May-17	-481	Calendar Day																								
S10-T5-B2-1310	OHVD Base Slab (South) - Hanger Wall & Scaffolding to Roof	3	3	10-May-17	12-May-17	-477	Calendar Day																								
S10-T5-B2-1320	Roof - Waterproofing	7	7	10-May-17	16-May-17	-481	Calendar Day																								
S10-T5-B2-1330	Roof - Rebar Fixing & Formwork	13	13	17-May-17	29-May-17	-481	Calendar Day																								
S10-T5-B2-1340	Roof - Concrete	1	1	30-May-17	30-May-17	-481	Calendar Day																								
S10-T5-B2-1350	Roof - Curing	12	12	31-May-17	12-Jun-17	-481	Calendar Day																								
S10-T5-B2-1360	Roof - Scaffolding Dismantling	3	3	12-Jun-17	14-Jun-17	-22	Calendar Day																								

◆ Milestone
◆ Critical Milestones
█ Current Works
█ Critical Works
█ Remaining Level of Effort

**CHUN WO - CRGL
JOINT VENTURE**

CEDD CONTRACT NO. HK/2009/02
WD II - Central Wanchai Bypass at Wan Chai East (Contract 2)
3-MONTH ROLLING PROGRAMME (dd 20-Apr-17)

Date	Revision	Checked	Approved
	Rev. Programme (08-Apr-...		

Activity ID	Activity Name	Ori Dur	Rem Dur	Scheduled/ Actual Start	Scheduled/ Actual Finish	Total Float	Calendar	2017																
								April			May			June			July							
								26	02	09	16	23	30	07	14	21	28	04	11	18	25	02	09	16
S10-T5-B2-1400	Construct Roadside Barriers	5	4	20-Feb-17 A	23-Apr-17	-174	Calendar Day	Construct Roadside Barriers, Construct Roadside Barriers																
Bay 1 (3 Cells) (Western End Bay)																								
S10-T5-B1-1050	Wall (North) - Waterproofing & Working Platform	4	0	22-Mar-17 A	25-Mar-17 A		Calendar Day	Wall (North) - Waterproofing & Working Platform																
S10-T5-B1-1060	Wall (North) - Rebar Fixing	3	0	26-Mar-17 A	30-Mar-17 A		Calendar Day	Wall (North) - Rebar Fixing																
S10-T5-B1-1070	Wall (North) - Formwork	3	0	31-Mar-17 A	03-Apr-17 A		Calendar Day	Wall (North) - Formwork																
S10-T5-B1-1080	Wall (North) - Concrete	1	0	05-Apr-17 A	05-Apr-17 A		Calendar Day	Wall (North) - Concrete																
S10-T5-B1-1090	Wall (North) - Curing & Formwork Dismantling	3	2	06-Apr-17 A	21-Apr-17	-485	Calendar Day	Wall (North) - Curing & Formwork Dismantling, Wall (North) - Curing & Formwork Dismantling																
S10-T5-B1-1100	Wall (South) - Waterproofing & Working Platform	4	0	27-Mar-17 A	30-Mar-17 A		Calendar Day	Wall (South) - Waterproofing & Working Platform																
S10-T5-B1-1110	Wall (South) - Rebar Fixing	3	0	31-Mar-17 A	02-Apr-17 A		Calendar Day	Wall (South) - Rebar Fixing																
S10-T5-B1-1120	Wall (South) - Formwork	2	0	03-Apr-17 A	04-Apr-17 A		Calendar Day	Wall (South) - Formwork																
S10-T5-B1-1130	Wall (South) - Concrete	1	0	05-Apr-17 A	05-Apr-17 A		Calendar Day	Wall (South) - Concrete																
S10-T5-B1-1140	Wall (South) - Curing & Formwork Dismantling	3	0	06-Apr-17 A	08-Apr-17 A		Calendar Day	Wall (South) - Curing & Formwork Dismantling																
S10-T5-B1-1230	OHVD Base Slab (North & Middle) - Scaffolding Erection	13	5	06-Apr-17 A	26-Apr-17	-485	Calendar Day	OHVD Base Slab (North & Middle) - Scaffolding Erection, OHVD Base Slab (North & Middle) - Scaffolding Erection																
S10-T5-B1-1240	OHVD Base Slab (North & Middle) - Formwork & Rebar Fixing	13	13	24-Apr-17	06-May-17	-485	Calendar Day	OHVD Base Slab (North & Middle) - Formwork & Rebar Fixing, OHVD Base Slab (North & Middle) - Formwork & Rebar Fixing																
S10-T5-B1-1250	OHVD Base Slab (North & Middle) - Concrete & Curing	2	2	07-May-17	08-May-17	-485	Calendar Day	OHVD Base Slab (North & Middle) - Concrete & Curing, OHVD Base Slab (North & Middle) - Concrete & Curing																
S10-T5-B1-1260	OHVD Base Slab (North & Middle) - Hanger Wall & Scaffolding to Roof	4	4	09-May-17	12-May-17	-480	Calendar Day	OHVD Base Slab (North & Middle) - Hanger Wall & Scaffolding to Roof, OHVD Base Slab (North & Middle) - Hanger Wall & Scaffolding to Roof																
S10-T5-B1-1310	OHVD Base Slab (South) - Scaffolding Erection	12	6	06-Apr-17 A	25-Apr-17	-483	Calendar Day	OHVD Base Slab (South) - Scaffolding Erection, OHVD Base Slab (South) - Scaffolding Erection																
S10-T5-B1-1320	OHVD Base Slab (South) - Formwork & Rebar Fixing	13	13	22-Apr-17	04-May-17	-483	Calendar Day	OHVD Base Slab (South) - Formwork & Rebar Fixing, OHVD Base Slab (South) - Formwork & Rebar Fixing																
S10-T5-B1-1330	OHVD Base Slab (South) - Concrete & Curing	2	2	05-May-17	06-May-17	-483	Calendar Day	OHVD Base Slab (South) - Concrete & Curing, OHVD Base Slab (South) - Concrete & Curing																
S10-T5-B1-1340	OHVD Base Slab (South) - Hanger Wall & Scaffolding to Roof	4	4	07-May-17	10-May-17	-478	Calendar Day	OHVD Base Slab (South) - Hanger Wall & Scaffolding to Roof, OHVD Base Slab (South) - Hanger Wall & Scaffolding to Roof																
S10-T5-B1-1350	Roof - Waterproofing	9	9	09-May-17	17-May-17	-485	Calendar Day	Roof - Waterproofing, Roof - Waterproofing																
S10-T5-B1-1360	Roof - Rebar Fixing & Formwork	16	16	18-May-17	02-Jun-17	-485	Calendar Day	Roof - Rebar Fixing & Formwork, Roof - Rebar Fixing & Formwork																
S10-T5-B1-1370	Roof - Concrete	1	1	03-Jun-17	03-Jun-17	-485	Calendar Day	Roof - Concrete, Roof - Concrete																
S10-T5-B1-1380	Roof - Curing	12	12	04-Jun-17	15-Jun-17	-485	Calendar Day	Roof - Curing, Roof - Curing																
S10-T5-B1-1390	Roof - Scaffolding Dismantling	5	5	15-Jun-17	20-Jun-17	-34	Calendar Day	Roof - Scaffolding Dismantling, Roof - Scaffolding Dismantling																
S10-T5-B1-1400	Construct Roadside Barriers	7	0	22-Mar-17 A	14-Apr-17 A		Calendar Day	Construct Roadside Barriers																
Outstanding Works																								
S10-T5-OUT-1020	TP5 - Carry out defects rectification works	30	30	28-May-17	27-Jun-17	-34	Calendar Day	TP5 - Carry out defects rectification																
Section 11 of the Works - Remainder of Works																								
Marine Works at WCR3																								
S11-R3-2100	Mass Concrete Coping for Blockwork Seawall next to Type 2X caisson unit	18	18	16-Jun-17	04-Jul-17	-76	Calendar Day	Mass Concrete Coping																
Demolition Works																								
S11-DEMO-1310	Demolition of abandoned seawall down to +1.5mPD - at the south of Tunnel Portion 5	12	12	04-Jul-17	17-Jul-17	-50	HK Working Day	Demo																
Formation and Hard Landscaping Works																								
S11-FM-5000A	Tunnel Portion 5 Backfilling (Sorted Public Fill or alternative filling material 45,000m3; 1100m3/d)	41	41	16-Jun-17	31-Jul-17	-438	HK Working Day																	
Misc. Works																								
Removal of Temporary Reclamation CH 3710 to CH 3790 (East)																								
S11-RTC-3068	Works within Temp D-Wall - Demolish top of Temp D-Wall at Bay 1 and Bay 2 (+2.425mPD) of HHR bridge	6	0	16-Mar-17 A	21-Mar-17 A		HK Working Day	Works within Temp D-Wall - Demolish top of Temp D-Wall at Bay 1 and Bay 2 (+2.425mPD) of HHR bridge																
S11-RTC-3069	Works within Temp D-Wall - Demolish top of Temp D-Wall at Bay 3 (+0.925mPD) of HHR bridge	7	0	18-Mar-17 A	22-Mar-17 A		HK Working Day	Works within Temp D-Wall - Demolish top of Temp D-Wall at Bay 3 (+0.925mPD) of HHR bridge																
S11-RTC-3070	Works within Temp D-Wall - Backfill with Sorted Public Fill from +1.5mPD to +2.75mPD to formation level of HHR bridge	2	0	24-Mar-17 A	19-Apr-17 A		HK Working Day	Works within Temp D-Wall - Backfill with Sorted Public Fill from +1.5mPD to +2.75mPD to formation level of HHR bridge																
Removal of Temporary Reclamation CH 3630 to CH 3710 (West)																								
S11-RTC-3250	Works within Temp D-Wall - Construct temporary walls from -7.0mPD to -4.0mPD 152 nos. (15 nos./day)	28	8	06-Jan-17 A	27-Apr-17	-585	Calendar Day	Works within Temp D-Wall - Construct temporary walls from -7.0mPD to -4.0mPD 152 nos. (15 nos./day), Works within Temp D-Wall - Construct temporary walls from -7.0mPD to -4.0mPD 152 nos. (15 nos./day)																
S11-RTC-3252	Works within Temp D-Wall - Place Type A rockfill and Filter to -7.0mPD to -4.0mPD (400m3@300m3/d)	15	12	06-Mar-17 A	09-May-17	-560	Calendar Day	Works within Temp D-Wall - Place Type A rockfill and Filter to -7.0mPD to -4.0mPD (400m3@300m3/d)																
S11-RTC-3256	Works within Temp D-Wall - Place Sorted Public Fill from -7.0mPD to -3.0mPD with 35 deg fill slope (4,150m3@200m3/d)	53	45	08-Apr-17 A	07-Jun-17	-524	HK Working Day	Works within Temp D-Wall - Place Sorted Public Fill from -7.0mPD to -3.0mPD with 35 deg fill slope (4,150m3@200m3/d)																
S11-RTC-3257	Works within Temp D-Wall - Remove ELS S1 Grid 0 - Grid 7	14	14	08-Jun-17	22-Jun-17	-524	HK Working Day	Works within Temp D-Wall - Remove ELS S1 Grid 0 - Grid 7																
S11-RTC-3258	Works within Temp D-Wall - Place Sorted Public Fill from -3.0mPD to +1.5mPD with 35 deg fill slope (2,800m3@200m3/d)	14	14	22-Jun-17	08-Jul-17	-524	HK Working Day	Works within Temp D-Wall - Place Sorted Public Fill from -3.0mPD to +1.5mPD with 35 deg fill slope (2,800m3@200m3/d)																
S11-RTC-3435	Works at South-West corner - Remove sheet pile decking (75 nos. sheet pile decking @ 2 nos./day)	30	0	01-Mar-17 A	11-Apr-17 A		HK Working Day	Works at South-West corner - Remove sheet pile decking (75 nos. sheet pile decking @ 2 nos./day)																
Removal of Temporary D-Wall CH 3630 to CH 3710																								
S11-RTC-3340	Preparation for D-Wall Cutting - Advance Coring inside D Wall (73 nos. for cutting, 2 machines @ 1no./machine/day)	50	50	12-Jul-17*	01-Sep-17	-634	HK Working Day																	
Hung Hing Road Flyover Reinstatement																								
Hung Hing Road Flyover - Bay 1 (West Side) CH 3709-3732																								
S11-HH-4009	Reinstatement of HHR Flyover - Complete the formation level and lay blinding layer for the west abutment	1	1	20-Apr-17	20-Apr-17	-606	HK Working Day	Reinstatement of HHR Flyover - Complete the formation level and lay blinding layer for the west abutment, Reinstatement of HHR Flyover - Complete the formation level and lay blinding layer for the west abutment																
S11-HH-4010	Reinstatement of HHR Flyover - Erect fmk for the base slab of west abutment	5	5	20-Apr-17	26-Apr-17	-605	HK Working Day	Reinstatement of HHR Flyover - Erect fmk for the base slab of west abutment, Reinstatement of HHR Flyover - Erect fmk for the base slab of west abutment																
S11-HH-4011	Reinstatement of HHR Flyover - Fix Re-bars for the base slab of west abutment	3	3	22-Apr-17	25-Apr-17	-605	HK Working Day	Reinstatement of HHR Flyover - Fix Re-bars for the base slab of west abutment, Reinstatement of HHR Flyover - Fix Re-bars for the base slab of west abutment																
S11-HH-4012	Reinstatement of HHR Flyover - Concreting for the base slab of west abutment	1	1	26-Apr-17	26-Apr-17	-605	HK Working Day	Reinstatement of HHR Flyover - Concreting for the base slab of west abutment, Reinstatement of HHR Flyover - Concreting for the base slab of west abutment																

- ◆ Milestone
- ◆ Critical Milestones
- █ Current Works
- █ Critical Works
- █ Remaining Level of Effort

**CHUN WO - CRGL
JOINT VENTURE**

**CEDD CONTRACT NO. HK/2009/02
WD II - Central Wanchai Bypass at Wan Chai East (Contract 2)
3-MONTH ROLLING PROGRAMME (dd 20-Apr-17)**

Date	Revision	Checked	Approved
	Rev. Programme (08-Apr-...		

Activity ID	Activity Name	Original Duration	Start	Finish	2017																		
					Apr			May			Jun			Jul									
Total		1791d	21-Mar-13 A	09-Feb-18																			
DWP-07 - (6) - Update Progress As of 20 Apr 17		1791d	21-Mar-13 A	09-Feb-18																			
Works in KD2		95d	01-Mar-17 A	03-Jun-17																			
Works in TS3-East		95d	01-Mar-17 A	03-Jun-17																			
Removal of Temporary Reclamation at TS3(E)		95d	01-Mar-17 A	03-Jun-17																			
TS3E Remaining Works & TS3E/TS3W, TS3E/TS2 Stitching Works		95d	01-Mar-17 A	03-Jun-17																			
West Bound Tunnel (W/B)		91d	01-Mar-17 A	30-May-17																			
Outstanding Reinforced Concrete Works		91d	01-Mar-17 A	30-May-17																			
A6570	General Cleaning Works for the Tunnel, CCTV and Pipe WaterJack Cleaning	10d	01-Mar-17 A	07-Apr-17 A																			
A6580	Joint Site Walk	5d	20-Apr-17	24-Apr-17																			
A6590	Handover Date	1d	30-May-17	30-May-17																			
Stitching of TS2 & TS3E (5.0 m Tunnel Length for Base Slab, Roof Slab, Approx. 15 m length for OHVD)		40d	20-Apr-17	29-May-17																			
A6650	TS2/TS3E OHVD (Hindrance: Falsework Erection and Rebar Lifting) - 10 days	23d	20-Apr-17	12-May-17																			
A6660	Falsework Removal for OHVD - 7 days	7d	23-May-17	29-May-17																			
Profile Barrier and Maintenance Walkway		8d	20-Apr-17	27-Apr-17																			
A6700	Install Precast Concrete Covers on Cable Trough (2 X 90m)	8d	20-Apr-17	27-Apr-17																			
East Bound Tunnel (E/B)		62d	06-Mar-17 A	03-Jun-17																			
Outstanding Reinforced Concrete Works		62d	06-Mar-17 A	03-Jun-17																			
A6950	General Cleaning Works for the Tunnel	25d	11-Mar-17 A	23-Mar-17 A																			
A6960	Joint Site Walk	5d	29-May-17	02-Jun-17																			
A6970	Handover Date	1d	03-Jun-17	03-Jun-17																			
Stitching of TS2 & TS3E (5.0 m Length for Base Slab, Roof Slab, Approx. 15 m length for OHVD)		56d	06-Mar-17 A	28-May-17																			
A6860	TS2/TS3E OHVD (Hindrance: Falsework Erection and Rebar Lifting) - 10 days	10d	06-Mar-17 A	11-May-17																			
A6870	Falsework Removal for OHVD - 7 days	7d	22-May-17	28-May-17																			
Profile Barrier and Maintenance Walkway		8d	24-Mar-17 A	31-Mar-17 A																			
A6910	Install Precast Concrete Covers on Cable Trough (2 X 90m)	8d	24-Mar-17 A	31-Mar-17 A																			
Works in KD7		81d	04-Mar-17 A	08-Jun-17																			
Works in TS3-West		81d	04-Mar-17 A	08-Jun-17																			
Tunnel Structure		81d	04-Mar-17 A	08-Jun-17																			
Earthwork Backfilling, ELS Removal and Water Recharging		38d	04-Mar-17 A	06-Apr-17 A																			
East Portion		38d	04-Mar-17 A	30-Mar-17 A																			
A2490	Stage 4 Backfilling- 25000 m3 (-14mPD~ -7.0 mPD, Bay 2- Bay 4) - 1000 m3 per day	19d	04-Mar-17 A	22-Mar-17 A																			
A2520	Stage 5 Backfilling ~ 15000 m3 (-30 mPD ~ -7.0 mPD, Bay 1) ~ 1000 m3 per day	10d	22-Mar-17 A	28-Mar-17 A																			
A2500	Removal of 2nd Layer ELS and Removal of Reprop inside Tunnel (Bay 2- Bay 4)	7d	23-Mar-17 A	26-Mar-17 A																			
A2510	Closure of wall opening in Bay 1 of CCT (Wall 4 and Wall 5)	14d	23-Mar-17 A	26-Mar-17 A																			
A2530	Removal of 2nd Layer ELS (Bay 1)	5d	29-Mar-17 A	30-Mar-17 A																			
West Portion		6d	10-Mar-17 A	20-Mar-17 A																			
A2550	Removal of 2nd Layer ELS - 6 days	6d	10-Mar-17 A	20-Mar-17 A																			
Water Recharge (CNY- 27/1- 2/2)		1d	31-Mar-17 A	06-Apr-17 A																			
A2560	Water Re-charge to ELS Cofferdam	1d	31-Mar-17 A	06-Apr-17 A																			
Skin Wall Removal Works between TS4/TS3W and Shaft D Closure		81d	23-Mar-17 A	08-Jun-17																			
A2590	Skin Wall Removal Works between TS4/TS3W - 20 days (2nd stage) - After Tunnel Roof Slab Completion - E/B and W/B	20d	23-Mar-17 A	09-May-17																			
A2600	Construction of Remaining Tunnel Structure between CH. 4260.2- 4265.2 at SOL T100 for Mainline E/B, W/B, SR8	30d	10-May-17	08-Jun-17																			

- Actual Work
- Remaining Work
- Critical Remaining Work
- ◆ Milestone

Date	Revision	Checked	Approved
20-Apr-17	DWP-07 (6) - 3 Months Rolling	FS	TL

Activity ID	Activity Name	Original Duration	Start	Finish	2017					
					Apr	May	Jun	Jul		
Removal Bulkhead at CH525 (TS3W / SR8 Junction)										
A6080	Remove Bulkhead between TS3W & SR8	37d	06-Mar-17 A	13-Apr-17 A	Remove Bulkhead between TS3W & SR8					
A5180	Remove Scaffolding of SR1R Roof	4d	22-Mar-17 A	25-Mar-17 A	of SR1R Roof					
Works in KD8										
TS3W - Remove Temporary Reclamation										
Stage 1 - North West Corner (Bay Z4-25 to Bay 20)										
A2660	Remove filled material to -4.35mPD at Bay Z4-25 to Bay 19 (6,500m3)	8d	09-Mar-17 A	24-Mar-17 A	Remove filled material to -4.35mPD at Bay Z4-25 to Bay 19 (6,500m3)					
A2670	Remove filled material to -4.35mPD at Bay Z4-22 to Z4-24 (4,500m3)	5d	25-Mar-17 A	14-Apr-17 A	Remove filled material to -4.35mPD at Bay Z4-22 to Z4-24 (4,500m3)					
A2680	Remove seawall blocks at Bay Z4-25 to Bay 20 (426 nos.)	8d	27-Mar-17 A	10-Apr-17 A	Remove seawall blocks at Bay Z4-25 to Bay 20 (426 nos.)					
A6260	Remove filled material to -7.0 mPD	4d	05-Apr-17 A	13-Apr-17 A	Remove filled material to -7.0 mPD					
Stage 2 - North to East Side (Bay 19 to Bay 11 + Bay 26 to Bay 28)										
A2690	Break concrete slab at Bay 19 to Bay 11 + Bay 26 to Bay 28 (2,500m2)	7d	24-Mar-17 A	31-Mar-17 A	Break concrete slab at Bay 19 to Bay 11 + Bay 26 to Bay 28 (2,500m2)					
A2700	Remove filled material to +2.8mPD (2,500m3)	7d	01-Apr-17 A	07-Apr-17 A	Remove filled material to +2.8mPD (2,500m3)					
Stage 3 - North to East Side (Bay 19 to bay 26)										
A2710	Completion of Recharging of Sea Water into TS3W Cofferdam	2d	31-Mar-17 A	04-Apr-17 A	Completion of Recharging of Sea Water into TS3W Cofferdam					
North West D-wall Opening										
A2720	Core D-wall cut holes at Panel DW02 to NA6 (27 nos.)	6d	07-Apr-17 A	10-Apr-17 A	Core D-wall cut holes at Panel DW02 to NA6 (27 nos.)					
A2730	Vertical cut at Panel DW02 to NA6 (19 nos.)	8d	14-Apr-17 A	20-Apr-17 A	Vertical cut at Panel DW02 to NA6 (19 nos.)					
A2740	Horizontal cut at Panel DW02 to NA6 (25 nos.)	8d	21-Apr-17 A	29-Apr-17 A	Horizontal cut at Panel DW02 to NA6 (25 nos.)					
North East & East										
A2750	Remove filled material to -4.35mPD (22,500m3)	9d	13-Apr-17 A	26-Apr-17	Remove filled material to -4.35mPD (22,500m3)					
A2760	Remove seawall blocks at Bay 19 to 11 & Bay 26 to 28 (1,335 nos.)	13d	20-Apr-17 A	29-Apr-17	Remove seawall blocks at Bay 19 to 11 & Bay 26 to 28 (1,335 nos.)					
A2770	Remove filled material to -7.0mPD (North & East side)	10d	29-Apr-17 A	01-May-17	Remove filled material to -7.0mPD (North & East side)					
Stage 4 - West & South Side (Remove Seawall Block Bay Z4-23 & 24, Excavate to -4.35mPD)										
West Side										
A2790	Remove seawall blocks at Bay Bay Z4-23 to Z4-24 (249 nos.)	5d	31-Mar-17 A	02-May-17	Remove seawall blocks at Bay Bay Z4-23 to Z4-24 (249 nos.)					
A2800	Remove filled material to -7.0mPD (West)	5d	03-May-17	07-May-17	Remove filled material to -7.0mPD (West)					
North East Side										
A2810	Core D-wall cut holes at Panel W1D1 to W1D32 (128 nos.) (North Side)	14d	19-Apr-17 A	26-Apr-17 A	Core D-wall cut holes at Panel W1D1 to W1D32 (128 nos.) (North Side)					
A2820	Vertical cut at Panel W1D1 to W1D32 (96 nos.) (North Side)	16d	27-Apr-17 A	08-May-17	Vertical cut at Panel W1D1 to W1D32 (96 nos.) (North Side)					
A2830	Horizontal cut at Panel W1D1 to W1D32 (128 nos.) (North Side)	20d	17-May-17	05-Jun-17	Horizontal cut at Panel W1D1 to W1D32 (128 nos.) (North Side)					
East Side										
A2840	Core D-wall cut holes at Panel TZ31 to TZ38 (32 nos.) (East Side)	10d	20-Apr-17 A	26-Apr-17 A	Core D-wall cut holes at Panel TZ31 to TZ38 (32 nos.) (East Side)					
A2850	Vertical cut at Panel TZ31 to TZ38 (24 nos.) (East Side)	9d	16-May-17	24-May-17	Vertical cut at Panel TZ31 to TZ38 (24 nos.) (East Side)					
A2860	Horizontal cut at Panel TZ31 to TZ38 (32 nos.) (East Side)	10d	25-May-17	03-Jun-17	Horizontal cut at Panel TZ31 to TZ38 (32 nos.) (East Side)					
South Side										
A2870	Remove filled material to -4.35mPD (41,300m3)	30d	20-Apr-17	19-May-17	Remove filled material to -4.35mPD (41,300m3)					
Stage 5 - West & South side (Reove Seawall Block Bay 24 7 25, Excavate to -7.0mPD)										
A2910	Core D-wall cut holes at Panel BWD2 to BWD9 (30 nos.) (West Side)	5d	12-Apr-17 A	17-Apr-17 A	Core D-wall cut holes at Panel BWD2 to BWD9 (30 nos.) (West Side)					
A2920	Vertical cut at Panel BWD2 to BWD9 (22 nos.) (West Side)	8d	08-May-17	15-May-17	Vertical cut at Panel BWD2 to BWD9 (22 nos.) (West Side)					
A2930	Horizontal cut at Panel BWD2 to BWD9 (29 nos.) (West Side)	8d	16-May-17	23-May-17	Horizontal cut at Panel BWD2 to BWD9 (29 nos.) (West Side)					
A2880	Remove seawall blocks at Bay 24, 25 (264 nos.) (South West)	6d	20-May-17	25-May-17	Remove seawall blocks at Bay 24, 25 (264 nos.) (South West)					
A2890	Remove seawall blocks at Bay 2 to 4 (550 nos.) (South East)	11d	20-May-17	30-May-17	Remove seawall blocks at Bay 2 to 4 (550 nos.) (South East)					
A2900	Remove filled material to -7.0mPD (South)	7d	31-May-17	06-Jun-17	Remove filled material to -7.0mPD (South)					

Activity ID	Activity Name	Original Duration	Start	Finish	2017			
					Apr	May	Jun	Jul
Stage 6 - West & South Side (Saw Cut D-wall + Shaft D)								
A2940	Remove fill material to -7.0mPD around shaft D	5d	24-May-17	28-May-17			Remove fill material to -7.0mPD around shaft D	
A2950	Core D-wall cut holes at Panel W2D1 to W2D18 (72 nos.) (South West)	9d	07-Jun-17	15-Jun-17			Core D-wall cut holes at Panel W2D1 to W2D18 (72 nos.) (South West)	
A2980	Core D-wall cut holes at Panel W2D23 to W2D34 (50 nos.) (South East)	10d	07-Jun-17	16-Jun-17			Core D-wall cut holes at Panel W2D23 to W2D34 (50 nos.) (South East)	
A2990	Vertical cut at Panel W2D23 to W2D34 (38 nos.) (South East)	13d	11-Jun-17	23-Jun-17			Vertical cut at Panel W2D23 to W2D34 (38 nos.) (South East)	
A2960	Vertical cut at Panel W2D1 to W2D18 (54 nos.) (South West)	18d	15-Jun-17	02-Jul-17			Vertical cut at Panel W2D1 to W2D18 (54 nos.) (South West)	
A3000	Horizontal cut at Panel W2D23 to W2D34 (50 nos.) (South East)	13d	18-Jun-17	30-Jun-17			Horizontal cut at Panel W2D23 to W2D34 (50 nos.) (South East)	
A2970	Horizontal cut at Panel W2D1 to W2D18 (72 nos.) (South West)	18d	23-Jun-17	10-Jul-17			Horizontal cut at Panel W2D1 to W2D18 (72 nos.) (South West)	
Stage 7 - West & South Side (Saw Cut Shaft D, Excavate to -7.0mPD at SR8)								
A3010	Vertical cut at Shaft D (14 nos.)	10d	29-May-17	07-Jun-17			Vertical cut at Shaft D (14 nos.)	
A3020	Horizontal cut at Shaft D (14 nos.)	5d	08-Jun-17	12-Jun-17			Horizontal cut at Shaft D (14 nos.)	
A3030	Remove filled material to -7.0mPD at SR8	7d	01-Jul-17	07-Jul-17			Remove filled material to -7.0mPD at SR8	
Stage 8 - South East & West Side (Remove Seawall Block Bay Z4-22 to Bay 23, Saw Cut D-wall at SR8)								
South West Side								
A3040	Remove seawall blocks at Bay Z4-22 to Bay 23 (741 nos.)	15d	13-Jun-17	27-Jun-17			Remove seawall blocks at Bay Z4-22 to Bay 23 (741 nos.)	
A3050	Remove filled material to -7.0mPD (South West)	8d	28-Jun-17	05-Jul-17			Remove filled material to -7.0mPD (South West)	
A3060	Vertical cut at Panel BWD10 to SA7 (26 nos.) (South West)	9d	06-Jul-17	14-Jul-17			Vertical cut at Panel BWD10 to SA7 (26 nos.) (South West)	
A3070	Horizontal cut at Panel BWD10 to SA7 (37 nos.) (South West)	10d	15-Jul-17	24-Jul-17			Horizontal cut at Panel BWD10 to SA7 (37 nos.) (South West)	
SR08 - West Wall								
A3080	Vertical cut at Panel W4D1 to W4D11 (28 nos.) (SR8)	10d	08-Jul-17	17-Jul-17			Vertical cut at Panel W4D1 to W4D11 (28 nos.) (SR8)	
A3090	Horizontal cut at Panel W4D1 to W4D11 (39 nos.) (SR8)	11d	18-Jul-17	28-Jul-17			Horizontal cut at Panel W4D1 to W4D11 (39 nos.) (SR8)	
SR08 - East Wall								
A7010	Vertical cut at Panel W4D1 to W4D11 (26 nos.)	9d	08-Jul-17	16-Jul-17			Vertical cut at Panel W4D1 to W4D11 (26 nos.)	
A7020	Horizontal cut at Panel W3D1 to W3D7 (36 nos.)	10d	17-Jul-17	26-Jul-17			Horizontal cut at Panel W3D1 to W3D7 (36 nos.)	
Works in KD6								
Works in SR8 (Open Cut Method)								
SR8 (Zone C) - Ch. 528 to Ch. 368								
Zone C - Tunnel Structure								
1.2m Thick Base Slab								
Bay C6								
A7540	C6 - Remove Strut SL5 & SL3	2d	26-Feb-17 A	21-Apr-17			C6 - Remove Strut SL5 & SL3	
1.0m Thick Wall at Both Side								
LHS Wall								
A7340	5th Pour - CH500 to CH525	7d	22-Apr-17	28-Apr-17			5th Pour - CH500 to CH525	
200mm Thick OHVD Slab & 400mm Thick Hanger Wall								
Bay C6								
A7570	C6 - Construct OHVD Slab & Hanger Wall	9d	01-May-17	09-May-17			C6 - Construct OHVD Slab & Hanger Wall	
1.2m Thick Roof Slab								
Bay C4								
A7610	C4 - Roof Slab Construction	13d	14-Feb-17 A	24-Mar-17 A			C4 - Roof Slab Construction	
Bay C5								
A7620	C5 - Roof Slab Construction	8d	16-Mar-17 A	25-Mar-17 A			C5 - Roof Slab Construction	
Bay C6								
A7630	C6 - Partial Roof + Up Stand Wall Construction for Access Shaft	9d	23-Mar-17 A	08-May-17			C6 - Partial Roof + Up Stand Wall Construction for Access Shaft	

Activity ID	Activity Name	Original Duration	Start	Finish	2017											
					Apr	May	Jun	Jul								
Egress Passage - EP01		31d	13-Mar-17 A	24-Apr-17 A												
Bay C1		31d	13-Mar-17 A	14-Apr-17 A												
A7690	C1 - EP01 Wall Construction	9d	13-Mar-17 A	30-Mar-17 A	Wall Construction											
A7700	C1 - EP01 Roof Construction	8d	13-Mar-17 A	30-Mar-17 A	Roof Construction											
A8010	C1 - Dismantle Scaffolding of EP01 Roof Slab - 10 days Curing	14d	31-Mar-17 A	14-Apr-17 A	C1 - Dismantle Scaffolding of EP01 Roof Slab - 10 days Curing											
Bay C2		31d	13-Mar-17 A	14-Apr-17 A												
A7710	C2 - EP01 Wall Construction	9d	13-Mar-17 A	30-Mar-17 A	Wall Construction											
A7720	C2 - EP01 Roof Construction	8d	13-Mar-17 A	30-Mar-17 A	Roof Construction											
A8020	C2 - Dismantle Scaffolding of EP01 Roof Slab - 10 days Curing	14d	31-Mar-17 A	14-Apr-17 A	C2 - Dismantle Scaffolding of EP01 Roof Slab - 10 days Curing											
Bay C3		31d	20-Mar-17 A	24-Apr-17 A												
A7730	C3 - EP01 Wall Construction	9d	20-Mar-17 A	05-Apr-17 A	C3 - EP01 Wall Construction											
A7740	C3 - EP01 Roof Construction	8d	20-Mar-17 A	05-Apr-17 A	C3 - EP01 Roof Construction											
A8030	C3 - Dismantle Scaffolding of EP01 Roof Slab - 10 days Curing	14d	06-Apr-17 A	24-Apr-17 A	C3 - Dismantle Scaffolding of EP01 Roof Slab - 10 days Curing											
Bay C4		31d	20-Mar-17 A	24-Apr-17 A												
A7750	C4 - EP01 Wall Construction	9d	20-Mar-17 A	05-Apr-17 A	C4 - EP01 Wall Construction											
A7760	C4 - EP01 Roof Construction	8d	20-Mar-17 A	05-Apr-17 A	C4 - EP01 Roof Construction											
A8040	C4 - Dismantle Scaffolding of EP01 Roof Slab - 10 days Curing	14d	06-Apr-17 A	24-Apr-17 A	C4 - Dismantle Scaffolding of EP01 Roof Slab - 10 days Curing											
Utility Trough		27d	20-Apr-17	16-May-17												
Bay C1		16d	20-Apr-17	05-May-17												
A7790	RHS / C1 - Backing Concrete	4d	20-Apr-17	23-Apr-17	RHS / C1 - Backing Concrete											
A7800	RHS / C1 - Profile Barrier	4d	24-Apr-17	27-Apr-17	RHS / C1 - Profile Barrier											
A7770	LHS / C1 - Backing Concrete	4d	28-Apr-17	01-May-17	LHS / C1 - Backing Concrete											
A7780	LHS / C1 - Profile Barrier	4d	02-May-17	05-May-17	LHS / C1 - Profile Barrier											
Bay C2		16d	20-Apr-17	05-May-17												
A7830	RHS / C2 - Backing Concrete	4d	20-Apr-17	23-Apr-17	RHS / C2 - Backing Concrete											
A7840	RHS / C2 - Profile Barrier	4d	24-Apr-17	27-Apr-17	RHS / C2 - Profile Barrier											
A7810	LHS / C2 - Backing Concrete	4d	28-Apr-17	01-May-17	LHS / C2 - Backing Concrete											
A7820	LHS / C2 - Profile Barrier	4d	02-May-17	05-May-17	LHS / C2 - Profile Barrier											
Bay C3		16d	20-Apr-17	05-May-17												
A7870	RHS / C3 - Backing Concrete	4d	20-Apr-17	23-Apr-17	RHS / C3 - Backing Concrete											
A7880	RHS / C3 - Profile Barrier	4d	24-Apr-17	27-Apr-17	RHS / C3 - Profile Barrier											
A7850	LHS / C3 - Backing Concrete	4d	28-Apr-17	01-May-17	LHS / C3 - Backing Concrete											
A7860	LHS / C3 - Profile Barrier	4d	02-May-17	05-May-17	LHS / C3 - Profile Barrier											
Bay C4		16d	20-Apr-17	05-May-17												
A7910	RHS / C4 - Backing Concrete	4d	20-Apr-17	23-Apr-17	RHS / C4 - Backing Concrete											
A7920	RHS / C4 - Profile Barrier	4d	24-Apr-17	27-Apr-17	RHS / C4 - Profile Barrier											
A7890	LHS / C4 - Backing Concrete	4d	28-Apr-17	01-May-17	LHS / C4 - Backing Concrete											
A7900	LHS / C4 - Profile Barrier	4d	02-May-17	05-May-17	LHS / C4 - Profile Barrier											
Bay C5		16d	01-May-17	16-May-17												
A7950	RHS / C5 - Backing Concrete	4d	01-May-17	04-May-17	RHS / C5 - Backing Concrete											
A7960	RHS / C5 - Profile Barrier	4d	05-May-17	08-May-17	RHS / C5 - Profile Barrier											
A7930	LHS / C5 - Backing Concrete	4d	09-May-17	12-May-17	LHS / C5 - Backing Concrete											
A7940	LHS / C5 - Profile Barrier	4d	13-May-17	16-May-17	LHS / C5 - Profile Barrier											
SR8 (Zone B) - Ch.385.000 to Ch.317.500 - (Inside Victoria Park to Tunnel Portal)		77d	20-Apr-17	05-Jul-17												

Activity ID	Activity Name	Original Duration	Start	Finish	2017				
					Apr	May	Jun	Jul	
SR8 (Zone B) Tunnel - ELS / CCT / BF Works (7 Bays Ch. 385.000 to Ch.317.500)									
Portal Structure									
OHVD									
Bay B1 + B2 (CH338.625 to CH368)									
SR8_ZB_1390	Zone B - OHVD - Erect Scaffolding & Soffit Formwork	6d	20-Apr-17	25-Apr-17	Zone B - OHVD - Erect Scaffolding & Soffit Formwork				
SR8_ZB_1400	Zone B - Redrill & Install Rebar on Soffit of Roof Slab	10d	26-Apr-17	05-May-17	Zone B - Redrill & Install Rebar on Soffit of Roof Slab				
SR8_ZB_1420	Zone B - OHVD - Rebar Fixing for Slab & Hanger Wall of OHVD	4d	06-May-17	10-May-17	Zone B - OHVD - Rebar Fixing for Slab & Hanger Wall of OHVD				
SR8_ZB_1430	Zone B - OHVD Erect Hanger Wall Formwork for OHVD	2d	11-May-17	12-May-17	Zone B - OHVD Erect Hanger Wall Formwork for OHVD				
SR8_ZB_1440	Zone B - OHVD Place Concrete to OHVD Slab & Wall	1d	13-May-17	13-May-17	Zone B - OHVD Place Concrete to OHVD Slab & Wall				
SR8_ZB_1450	Zone B - OHVD Curing Period for OHVD Slab	10d	15-May-17	25-May-17	Zone B - OHVD Curing Period for OHVD Slab				
SR8_ZB_1460	Zone B - OHVD Remove Soffit Formwork & Scaffolding	5d	26-May-17	01-Jun-17	Zone B - OHVD Remove Soffit Formwork & Scaffolding				
Utility Trough									
Left Hand Side									
SR8_ZB_1570	Zone B - U trough (LHS) Bay 3	7d	10-Jun-17	17-Jun-17			Zone B - U trough (LHS) Bay 3		
SR8_ZB_1560	Zone B - U trough (LHS) Bay 2	7d	19-Jun-17	26-Jun-17			Zone B - U trough (LHS) Bay 2		
SR8_ZB_1550	Zone B - U trough (LHS) Bay 1	7d	27-Jun-17	05-Jul-17			Zone B - U trough (LHS) Bay 1		
Right Hand Side									
SR8_ZB_1600	Zone B - U trough (RHS) Bay 3	7d	02-Jun-17	09-Jun-17			Zone B - U trough (RHS) Bay 3		
SR8_ZB_1590	Zone B - U trough (RHS) Bay 2	7d	10-Jun-17	17-Jun-17			Zone B - U trough (RHS) Bay 2		
SR8_ZB_1580	Zone B - U trough (RHS) Bay 1	7d	19-Jun-17	26-Jun-17			Zone B - U trough (RHS) Bay 1		
Pump House									
Remining Works inside Pump Sump E									
SR8_ZB_1890	Steel Works Installation inside Pump Sump E	45d	20-Apr-17	03-Jun-17	Steel Works Installation inside Pump Sump E				
SR8_ZB_1900	Installation Manhole Covers for Pump Sump E	7d	04-Jun-17	10-Jun-17	Installation Manhole Covers for Pump Sump E				
SR8 (Zone A) - Ch 317.500 to Ch 210.000 - U-Structure & Slab (Victoria Park)									
RC CCT & Backfill Ch317.5000 to Ch240.000									
Structure									
Utility Through									
SR8_ZA_1260	Zone A - Utility Trough for Zone A (CH240 to CH317)	28d	22-Jan-17 A	26-May-17	Zone A - Utility Trough for Zone A (CH240 to CH317)				
Works in KD9 (Include Re-provisioning Works of KD4,KD5)									
External Works Under KD9									
Tsing Fung St - RW & Subway Extension & Toe Wall at Hing Fat St									
Retaining Wall + Toe Wall at Hing Fat Street									
Retaining Wall RW8D									
Bay 3(10m) to Bay 4(10m)									
RW8D_1220	RW8D (Bay 3 to Bay 4) - Sub-soil & Backfilling to Base Slab	6d	23-Jan-17 A	23-Mar-17 A	- Sub-soil & Backfilling to Base Slab				
Works along RW8D During Reopen Hing Fat Street Footpath to Public									
A4910	Close slow lane of HFS to cut coping of RW8D and subway	20d	01-Mar-17 A	26-Apr-17 A	Close slow lane of HFS to cut coping of RW8D and subway				
A4920	Lay temp bituminous pavement for road diversion (from RW8D to Subway)	3d	20-Apr-17	22-Apr-17	Lay temp bituminous pavement for road diversion (from RW8D to Subway)				
A4940	Install steel vehicle parapet on RW8C, subway and RW8D	10d	20-Apr-17	02-May-17	Install steel vehicle parapet on RW8C, subway and RW8D				
Retaining Walls RW8E, Sign Footings & Sewer Pipe (SK266G, SK539C, SK375B)									
A4615	Re-occupy Hing Fat Street Footpath as site Area	1d	20-Mar-17 A	20-Mar-17 A	Footpath as site Area				
A4620	Excavate and lay blinding layer of RW8E (Including ELS)	14d	19-Apr-17 A	08-May-17	Excavate and lay blinding layer of RW8E (Including ELS)				
A4880	DS16 - Sign Frame Installation	14d	20-Apr-17	03-May-17	DS16 - Sign Frame Installation				

Activity ID	Activity Name	Original Duration	Start	Finish	2017			
					Apr	May	Jun	Jul
A4650	MH2-70 to MH2-71(150 dia. foul sewer pipe)	12d	20-Apr-17	05-May-17		MH2-70 to MH2-71(150 dia. foul sewer pipe)		
A4630	Construction of RW8E and toe wall (2+1 bays, 32m long)	45d	09-May-17	30-Jun-17			Construction of RW8E and toe wall (2+1 bays, 32m long)	
A4640	Backfill and subsoil drainage system behind RW8E	14d	03-Jul-17	18-Jul-17			Backfill and subsoil drainage system behind RW8E	
A4670	MH2-72 to MH2-73	12d	19-Jul-17	01-Aug-17				MH2-72 to MH2-73
Storm Drain Pipe behind RW8C along Tsing Fung Street (SK547A)		42d	20-Apr-17	10-Jun-17				
A4540	Modified MH shaft A2 at extg box culvert near MH TFS-04A	14d	20-Apr-17*	08-May-17		Modified MH shaft A2 at extg box culvert near MH TFS-04A		
A6410	MHTFS-06 to extg MH A3 (at slow lane of TFS)	14d	09-May-17	24-May-17		MHTFS-06 to extg MH A3 (at slow lane of TFS)		
A8050	MHTFS-05 to extg MH A3 (gully)	14d	25-May-17	10-Jun-17			MHTFS-05 to extg MH A3 (gully)	
Sign Footings at Victoria Park		75d	20-Apr-17	20-Jul-17				
A4570	Construction of 5m CCTV, AID, OHVD, TSG, luminance meter at verge inside VP	60d	20-Apr-17*	03-Jul-17			Construction of 5m CCTV, AID, OHVD, TSG, luminance meter at verge inside VP	
A4580	All drawpits (ATC, E&M and lighting) and ductings at verge inside VP (SK375B)	60d	10-May-17	20-Jul-17			All drawpits (ATC, E&M and lighting) and ductings at verge inside VP (SK375B)	
Boundary Fence, Type 2 Railing Footings & Fence Wall From RW8C to Zone B		242d	12-Dec-16 A	11-Sep-17				
A8070	Fence wall between BGO and Zone A (78.2m)	90d	12-Dec-16 A	03-Jul-17			Fence wall between BGO and Zone A (78.2m)	
A4700	Construction of boundary fence from RW8C toe wall to 15m CCTV high mast (approx. 53m)	50d	19-Dec-16 A	20-May-17		Construction of boundary fence from RW8C toe wall to 15m CCTV high mast (approx. 53m)		
A4710	Modification/ Re-construction of extg type 2 railing footing in front of RW8C (approx. 40m)	60d	10-Feb-17 A	01-Aug-17			Modification/ Re-construction of extg type 2 railing footing in front of RW8C (approx. 40m)	
A4720	Construction of boundary fence from 15m CCTV high mast to Zone A at CH210 (approx. 50m)	50d	22-May-17	20-Jul-17			Construction of boundary fence from 15m CCTV high mast to Zone A at CH210 (approx. 50m)	
A4730	Construction of boundary fence near nursery compound (approx. 167m, after completion of MH 2-73)	90d	27-May-17	11-Sep-17			Construction of boundary fence near nursery compound (approx. 167m, after completion of MH 2-73)	
Other Storm, Sewerage Pipe & Irrigation System in VP (SK336E, SK539D)		141d	21-Feb-17 A	07-Aug-17				
A4770	MH2-71 to TFS-06 via MH2-72 and MH 2-73 (300 dia. concrete pipe)	40d	21-Feb-17 A	26-May-17		MH2-71 to TFS-06 via MH2-72 and MH 2-73 (300 dia. concrete pipe)		
A4740	FMH-B01 to Extg 1-40 (5 MHS and 7 foul sewer PE pipeline)	90d	20-Apr-17	07-Aug-17			FMH-B01 to Extg 1-40 (5 MHS and 7 foul sewer PE pipeline)	
A4970	Irrigation Main Laying	14d	27-May-17	09-Jun-17		Irrigation Main Laying		
A4760	MHB (beside pump sump E) to MH2-70 (300 dia. stormwater pipeline)	14d	27-May-17	13-Jun-17			MHB (beside pump sump E) to MH2-70 (300 dia. stormwater pipeline)	
A4980	Water Points Installation	14d	10-Jun-17	23-Jun-17			Water Points Installation	
Preparation Works before Implementation TTA at Central Median		141d	02-Feb-17 A	20-Jul-17				
A4795	Excavate to formation level and lay subbase, fix K1 kerb along TFS	14d	02-Feb-17 A	05-May-17		Excavate to formation level and lay subbase, fix K1 kerb along TFS		
A4890	Laying Ducting Cross Access Ramp Down to Zone C SR8 Tunnel	60d	20-Apr-17	18-Jun-17			Laying Ducting Cross Access Ramp Down to Zone C SR8 Tunnel	
A4930	Shifting Site Entrance 6A	4d	19-Jun-17	22-Jun-17			Shifting Site Entrance 6A	
A4950	Laying Ducting in New SR8 Approaching Island	14d	23-Jun-17	06-Jul-17			Laying Ducting in New SR8 Approaching Island	
A5020	Forming Island Including Sub-base & Kerbing	14d	07-Jul-17	20-Jul-17			Forming Island Including Sub-base & Kerbing	
Reverting Traffic for IEC,VP Rd & TF St & Seawall Reinstatement (KD9)		98d	27-Mar-17 A	13-Aug-17				
TTA Revert Traffic Back to Original Alignment		98d	27-Mar-17 A	13-Aug-17				
Preparation Works - Backfill of Zone C to Top of Tunnel Structure		59d	27-Mar-17 A	16-Jun-17				
A5790	Waterproofing & Screeding to Roof	4d	27-Mar-17 A	14-May-17		Waterproofing & Screeding to Roof		
A5800	Load Transfer for King Post	6d	05-Apr-17 A	20-May-17		Load Transfer for King Post		
A5820	Zone C - Bay C1 to C5 Backfill to Formation & Remove Struts SL1 to SL3 (Up to +2.5mPD)	44d	10-Apr-17 A	16-Jun-17			Zone C - Bay C1 to C5 Backfill to Formation & Remove Struts SL1 to SL3 (Up to +2.5mPD)	
A5780	Curing to Roof Slab of Zone C	3d	08-May-17	10-May-17		Curing to Roof Slab of Zone C		
A5810	Make Good Box-out Left by King Post	2d	21-May-17	22-May-17		Make Good Box-out Left by King Post		
East Bound TTA - IEC East Bound, Victoria Park Road & Footpath along Sea Side		30d	17-Jun-17	16-Jul-17				
Stage 1 - IEC (East Bound)		30d	17-Jun-17	16-Jul-17				
A5240	IEC/EB - Construct Footing of Sign Gantry & Wing Wall	17d	17-Jun-17	03-Jul-17			IEC/EB - Construct Footing of Sign Gantry & Wing Wall	
A5260	IEC/EB - Backfill to Formation Level (Approx. 2.2mPD to +3.9mPD)	5d	17-Jun-17	21-Jun-17			IEC/EB - Backfill to Formation Level (Approx. 2.2mPD to +3.9mPD)	
A5270	IEC/EB - Reconstruct Wing Wall of Abutment M (approx. 6m)	10d	17-Jun-17	26-Jun-17			IEC/EB - Reconstruct Wing Wall of Abutment M (approx. 6m)	
A5280	IEC/EB - Cast Central Median	21d	17-Jun-17	07-Jul-17			IEC/EB - Cast Central Median	
A5310	IEC/EB - Remove Temporary Utilities Supports at IEC	3d	17-Jun-17	19-Jun-17			IEC/EB - Remove Temporary Utilities Supports at IEC	

Activity ID	Activity Name	Original Duration	Start	Finish	2017																				
					Apr	May	Jun	Jul																	
A3285	IEC/EB - Cut and Remove Pipe Pile (2m Below Ground Level)	7d	17-Jun-17	23-Jun-17																					
A5320	IEC/EB - Reinstate Existing Drainage System	14d	20-Jun-17	03-Jul-17																					
A3286	IEC/EB - Cut and Remove Sheet Pile (2m Below Ground Level)	7d	24-Jun-17	30-Jun-17																					
A5290	IEC/EB - Street Lighting Cable Duct & Poles	3d	01-Jul-17	03-Jul-17																					
A5250	IEC/EB - Install A Frame of Sign Gantry	4d	04-Jul-17	07-Jul-17																					
A5300	IEC/EB - TOC of Street Lightings	2d	04-Jul-17	05-Jul-17																					
A5330	IEC/EB - Backfill Drainage Tranch Up to Formnation (+2.5mPd to +3.9mPD)	5d	04-Jul-17	08-Jul-17																					
A5340	IEC/EB - Laying Sub-base	2d	09-Jul-17	10-Jul-17																					
A5350	IEC/EB - Laying Asphlat Pavement	3d	11-Jul-17	13-Jul-17																					
A5360	IEC/EB - Road Mark & Traffic Signs	3d	14-Jul-17	16-Jul-17																					
West Bound - IEC West Bound & Tsing Fung Street		58d	17-Jun-17	13-Aug-17																					
Stage 1 - IEC (West Bound)		30d	17-Jun-17	16-Jul-17																					
A5690	IEC/WB - Cut pipe pile - 1 week	7d	17-Jun-17	23-Jun-17																					
A5710	IEC/WB - Removal of pedestrian decking	11d	17-Jun-17	27-Jun-17																					
A3785	IEC/WB - Reconstruct Wing Wall of Abutment M (approx. 6m)	10d	17-Jun-17	26-Jun-17																					
A5700	IEC/WB - Cut sheetpile - 1 week	7d	24-Jun-17	30-Jun-17																					
A5720	IEC/WB - Remove temporary utilities support 3 days	3d	28-Jun-17	30-Jun-17																					
A5730	IEC/WB - Backfill up to Formation under Asphalt (from +2.5mPD to +3.9mPD) 5 days	5d	01-Jul-17	05-Jul-17																					
A5740	IEC/WB - Subbase Laying 2 days	2d	06-Jul-17	07-Jul-17																					
A5750	IEC/WB - Asphalt (Road Base, Base Course, Wearing Course) 5 days	5d	08-Jul-17	12-Jul-17																					
A5760	IEC/WB - Road Marking/Traffic Sign 3 days	3d	13-Jul-17	15-Jul-17																					
A5840	IEC/WB - Implement TTM	1d	16-Jul-17	16-Jul-17																					
Stage 2 - Tsing Fung Street		28d	17-Jul-17	13-Aug-17																					
A5850	Decking /Footing Removal - 2 weeks	14d	17-Jul-17	30-Jul-17																					
A5880	Light Weight Conc. Ramp Rem. 4 weeks	28d	17-Jul-17	13-Aug-17																					
A5890	Trench Excavation for Towngas - 4 weeks	28d	17-Jul-17	13-Aug-17																					
Reinstatement Existing Slopping & Vertical Sea Wall		55d	17-Jun-17	10-Aug-17																					
Major Reinstatement Works for Seawall Reinstatement		55d	17-Jun-17	10-Aug-17																					
Stage 1 - Removal of Remaining Pipe Pile Wall, Sheet Pile Wall & D-wall		55d	17-Jun-17	10-Aug-17																					
A7030	Backfill upto +2.5mPD at all bay of SR8	1d	17-Jun-17	17-Jun-17																					
A7040	Cut pipe pile wall at A1 - A14	14d	18-Jun-17	01-Jul-17																					
A7050	Under water cut sheet pile wall (36 nos.)	40d	02-Jul-17	10-Aug-17																					
Works in Victoria Park (KD4, KD5, KD9)		184d	20-Jan-17 A	06-Sep-17																					
Re-Provisioning Works		184d	20-Jan-17 A	06-Sep-17																					
Nursery Compound		184d	20-Jan-17 A	06-Sep-17																					
Submission		124d	20-Jan-17 A	27-Jun-17																					
ABWF Submission		99d	01-Feb-17 A	02-Jun-17																					
Material		99d	01-Feb-17 A	12-May-17																					
VP_NC_1060	ABWF Issue P.O. / Manufacturing / Fabrication	14d	01-Feb-17 A	18-Apr-17 A																					
VP_NC_1070	ABWF Materail Delivery	21d	19-Apr-17 A	12-May-17																					
Shop Drawing		14d	03-Feb-17 A	02-Jun-17																					
VP_NC_1090	ABWF Shop Drawing - ER Review and Approval	14d	03-Feb-17 A	02-Jun-17																					
E&M Submission		124d	20-Jan-17 A	27-Jun-17																					
Material		124d	20-Jan-17 A	27-Jun-17																					

Activity ID	Activity Name	Original Duration	Start	Finish	2017			
					Apr	May	Jun	Jul
VP_NC_1140	E&M Issue P.O. / Manufacturing / Fabrication	15d	20-Jan-17 A	22-May-17	E&M Issue P.O. / Manufacturing / Fabrication			
VP_NC_1150	E&M Materail Delivery	30d	23-May-17	27-Jun-17	E&M Materail Delivery			
Shop Drawing		30d	20-Apr-17	26-May-17				
VP_NC_1170	E&M Shop Drawing - ER Review and Approval	30d	20-Apr-17	26-May-17	E&M Shop Drawing - ER Review and Approval			
Nursery compound		125d	09-Mar-17 A	06-Sep-17				
A4410	Concreting of two concrete plinths, 150 thick curbs and 1450H parapet wall above roof slab	7d	09-Mar-17 A	30-Mar-17 A	g of two concrete plinths, 150 thick curbs and 1450H parapet wall above roof slab			
A4420	ABWF, Plumbing Works, waterproofing and E&M works	60d	05-Apr-17 A	06-Sep-17				
KD11, KD12, KD13, KD18 Establishment Works for Landscape Softworks		1087d	23-Feb-15 A	09-Feb-18				
KD11 - Section 7A: Portion XIV & XV (Victoria Park Open Space)		885d	23-Feb-15 A	09-Feb-18				
EW_1000	Establishment Works - for Landscape Softworks and transplanted trees in Portion XIV & XV	901d	23-Feb-15 A	09-Feb-18				
KD12 - Section 7B: Portion VI & VII (Reprov. Bowling Green Area)		177d	03-Dec-15 A	20-Apr-17				
EW_1010	Establishment Works - for Landscape Softworks and transplanted trees in Portion VI & VII	177d	03-Dec-15 A	20-Apr-17	Establishment Works - for Landscape Softworks and transplanted trees in Portion VI & VII			
KD10 - Preservation and Protection of Trees		1088d	21-Mar-13 A	20-Apr-17				
PPT_0000	Preservation and Protection of Existing Trees	1088d	21-Mar-13 A	20-Apr-17	Preservation and Protection of Existing Trees			
KD15 & KD8 - Mooring Components Upkeep (CBTS and ATS)		980d	15-May-14 A	20-Apr-17				
MAR_3020	Mooring Upkeep at Portion X(10) & XVI(16) - CBTS	979d	15-May-14 A	20-Apr-17	Mooring Upkeep at Portion X(10) & XVI(16) - CBTS			
Works for Public Works Regional Laboratory (North Lantau) - KD1,KD16,KD17)		1301d	19-Jul-13 A	21-Nov-17				
KD17 - Maintenance and Upkeep of New PWRL (Portion XVII)		1301d	19-Jul-13 A	21-Nov-17				
PWRL_1050	Maintenance/ Upkeep of New PWRL	1301d	19-Jul-13 A	21-Nov-17				